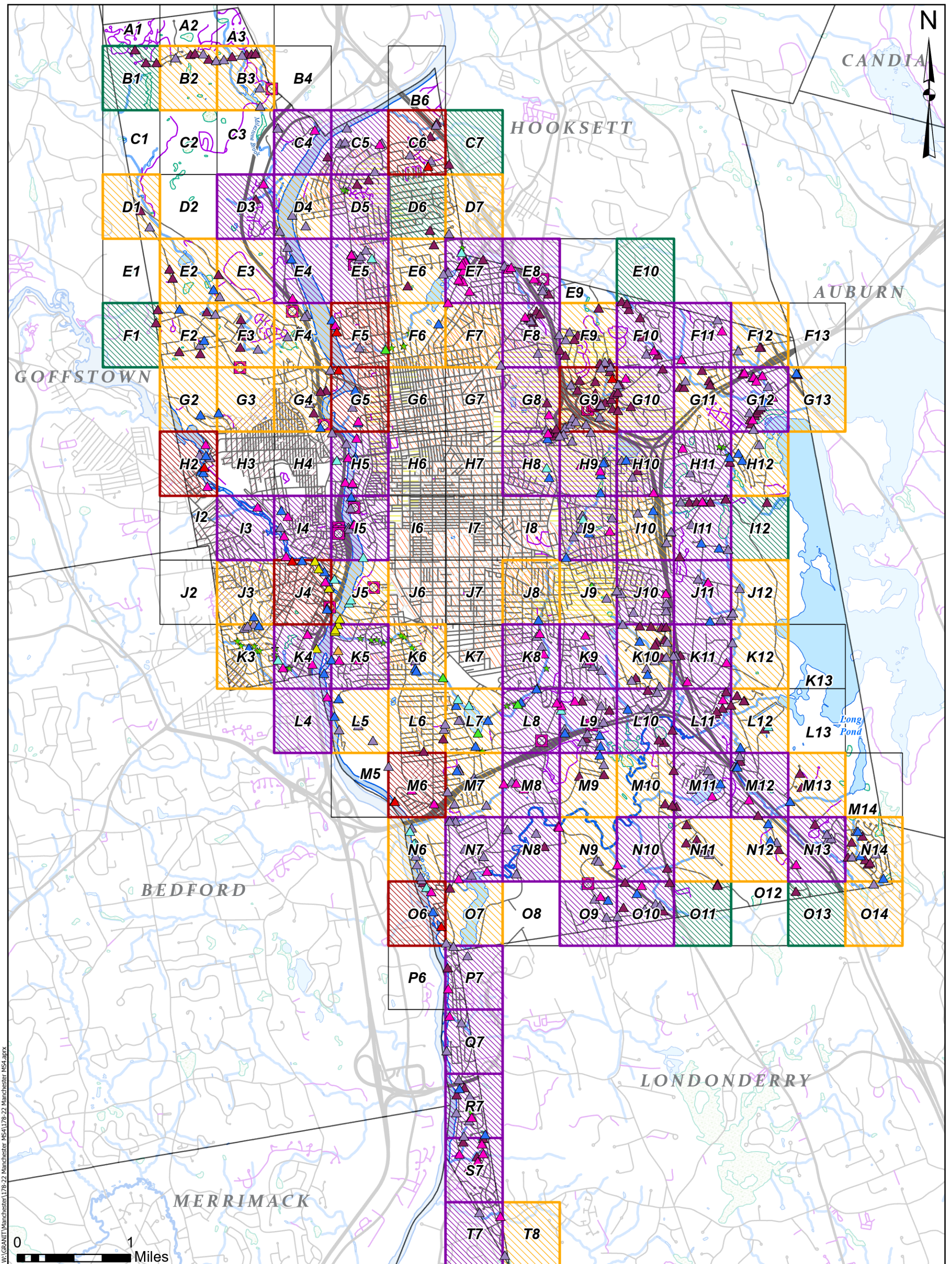


Appendix D

IDDE Outfall Classification/Ranking & Vulnerability



W:\GRANT\Manchester\178-22 Manchester MS4\178-22 Manchester MS4.aprx

Prioritized Outfalls:		Priority by Tile:		Legend	
▲ Top Priority	▲ 4	■ Highest	★ Drains to Streams	— State or Interstate	— Private Road
▲ Second Priority	▲ 3	■ High	■ Interconnection	— Pond, Reservoir	— Swamp, Marsh
▲ 7 or more	▲ 2	■ Medium	■ Combined Sewer	— Stream, River	
▲ 6	▲ 1	■ Low	■ Recombined Sewer		
▲ 5	▲ Low Priority Outfalls		■ Previously CSO		
			— Local Road		

Stormwater Map with Prioritized Outfalls and Areas Manchester, NH



Data Sources: GRANT, City of Manchester, CEI

Manchester, NH IDDE Outfall Classification and Ranking, By Outfall ID # - Revised December 2023

Outfall ID	Receiving Water	Receiving Water Impairment ¹	Top Priority		Second Priority			Problem		High Priority Outfalls													Excluded			Ranking		Notes											
			Ammonia ≥ 0.5 mg/L, surfactants ≥ 0.25 mg/L, and bacteria $>$ WQ criteria	Ammonia ≥ 0.5 mg/L, surfactants $>$ 0.25 mg/L, and detectable levels of chlorine	Ammonia $>$ 0.5 mg/L	Surfactants $>$ 0.25 mg/L	Chlorine $>$ 0 mg/L	Bacteria $>$ WQ criteria	Known or suspected contributions of illicit discharges	Olfactory or visual evidence of sewage	Discharge to/near public beach	Discharge to/near recreational area	Discharge to/near drinking water supply	Discharge to/near shellfish beds	Past Discharge Complaints	Density of Generating Sites					Age of			Catchment areas serviced by septic systems converted to sewer	Historic combined sewer system that has been separated	Density of septic systems ≥ 30 years old in residential land use	Culverted stream lengths greater than a simple roadway crossing		Discharge to impaired water & potential to carry that pollutant	Presence of older industrial operations	Roadway drainage in undeveloped areas with no dwellings and no sanitary sewers	Outfall is drainage for athletic fields, parks or undeveloped green space & associated parking without services	Cross-country drainage alignments through undeveloped land	Overall Ranking (Top Priority, 2nd Priority, Problem, High, Low, Excluded)	Ranking Score (Number of Boxes Checked)				
																Car dealers	Car washes	Gas stations	Garden centers	Industrial manufacturing areas	Other	Industrial areas $>$ 40 years old	Sewer areas $>$ 40 years old																
CEI-DOU-0104																																				High	1	Pine Grove Cemetery	
CEI-DOU-0105																																				High	1	Pine Grove Cemetery	
CEI-DOU-0106																																				High	1	The Hollows Disc Golf Course	
CEI-DOU-0107																																			2nd Priority	5	Golden Nozzle Car Wash, Tully BMW, Shell Gas, Merrill Cemetery		
CEI-DOU-0108																																				2nd Priority	2	Polymer Shapes	
CEI-DOU-0109																																					Low	0	
CEI-DOU-0110	Unnamed Stream																																			High	2	Galaxy Glass	
CEI-DOU-0111																																					High	1	Industrial Park
CEI-DOU-0112																																					High	1	Industrial Park
CEI-DOU-0113	NHRIV700060703-06 Unnamed tributary to Cohas Brook	Hg																																		High	1	Industrial Park	
CEI-DOU-0114	Unnamed Stream																																				High	1	
CEI-DOU-0115																																					High	1	Industrial Park
CEI-DOU-0116	Unnamed Stream																																				Low	0	
CEI-DOU-0117	Unnamed Stream																																				Low	0	
CEI-DOU-0118																																					Low	0	
CEI-DOU-0119																																					High	1	
CEI-DOU-0120																																					High	1	Crystal Lake Park
CEI-DOU-0122																																					Low	0	
CEI-DOU-0123																																					Low	0	
CEI-DOU-0126																																					Low	0	
CEI-DOU-0127																																					Low	0	
CEI-DOU-0128																																					Low	0	
CEI-DOU-0129																																					Low	0	
CEI-DOU-0130																																					Low	0	
CEI-DOU-0131																																					Low	0	
CEI-DOU-0132																																					Low	0	
CEI-DOU-0133																																					Low	0	
CEI-DOU-0134																																					High	1	
CEI-DOU-0135																																					High	3	Derryfield County Club/Golf Course
CEI-DOU-0136																																					High	2	Derryfield County Club/Golf Course
CEI-DOU-0137	NHLAK700060803-01 Nutt Pond	Chloride, Chlorophyll-a, DO, P, Hg, pH, Non-native aquatic plants																																		High	4	Quirk Chevy, Sunoco Gas	
CEI-DOU-0138																																					Low	0	
CEI-DOU-0139																																					Low	0	
CEI-DOU-0140																																					High	1	
CEI-DOU-0141																																					Low	0	
CEI-DOU-0142																																					Low	0	
CEI-DOU-0143																																					Low	0	
CEI-DOU-0144																																					Low	0	
CEI-DOU-0145																																					Low	0	
CEI-DOU-0146																																					Low	0	
CEI-DOU-0147																																					2nd Priority	1	
CEI-DOU-0148																																					High	2	Industrial Park
CEI-DOU-0149	Unnamed Stream																																			High	2	Citgo	
CEI-DOU-0150	NHLAK700060607-02 Namaske Lake	Chlorophyll-a, P, E. coli, Hg, pH, Non-native aquatic plants																																		2nd Priority	3		
CEI-DOU-0151																																					Low	0	
CEI-DOU-0152																																					High	1	
CEI-DOU-0153	Unnamed Stream																																			2nd Priority	1		
CEI-DOU-0154																																					High	1	
CEI-DOU-0155	NHRIV700060803-15 Humphrey Brook	Chloride, Hg																																		High	1		
CEI-DOU-0156																																					High	1	
CEI-DOU-0157	NHRIV700060803-14-02 Merrimack River	E. coli, Hg, Aluminum, pH																																		High	2		
CEI-DOU-0158	NHRIV700060803-14-02 Merrimack River	E. coli, Hg, Aluminum, pH																																		High	1		
CEI-DOU-0159	NHRIV700060803-14-02 Merrimack River	E. coli, Hg, Aluminum, pH																																		High	1		
CEI-DOU-0160																																					High	1	

Manchester, NH IDDE Outfall Classification and Ranking, By Outfall ID # - Revised December 2023

Outfall ID	Receiving Water	Receiving Water Impairment ¹	Top Priority Ammonia ≥ 0.5 mg/L, surfactants ≥ 0.25 mg/L, and bacteria > WQ criteria Ammonia ≥ 0.5 mg/L, surfactants > 0.25 mg/L, and detectable levels of chlorine Ammonia > 0.5 mg/L Surfactants > 0.25 mg/L Chlorine > 0 mg/L Bacteria > WQ criteria Known or suspected contributions of illicit discharges Olfactory or visual evidence of sewage	Second Priority	Problem	High Priority Outfalls																	Excluded		Ranking		Notes
						Discharge to/near public beach Discharge to/near recreational area Discharge to/near drinking water supply Discharge to/near shellfish beds Past Discharge Complaints	Density of Generating Sites					Age of		Catchment areas serviced by septic systems converted to sewer Historic combined sewer system that has been separated Density of septic systems ≥ 30 years old in residential land use Culverted stream lengths greater than a simple roadway crossing Discharge to impaired water & potential to carry that pollutant Presence of older industrial operations	Roadway drainage in undeveloped areas with no dwellings and no sanitary sewers Outfall is drainage for athletic fields, parks or undeveloped green space & associated parking without services Cross-country drainage alignments through undeveloped land	Overall Ranking (Top Priority, 2nd Priority, Problem, High, Low, Excluded)	Ranking Score (Number of Boxes Checked)										
							Car dealers Car washes Gas stations Garden centers Industrial manufacturing areas Other	Industrial areas > 40 years old Sewer areas > 40 years old																			
CEI-DOU-0161													x											High	2	Speedway Gas	
CEI-DOU-0162																									High	1	Speedway Gas
CEI-DOU-0163																									High	1	Smyth Rd Elementary School Field
CEI-DOU-0164	NHRIV70060803-08 Baker Brook	Chloride, Hg																							High	3	Precourt Park
CEI-DOU-0165																									High	2	Home Depot Garden Center
CEI-DOU-0166																									High	1	Airport
CEI-DOU-0167																									Low	0	
CEI-DOU-0168	Unnamed Stream																								Low	0	
CEI-DOU-0169																									High	1	
CEI-DOU-0170																									Low	0	
CEI-DOU-0172																									High	1	
CEI-DOU-0173																									High	1	
CEI-DOU-0174	Unnamed Stream																								2nd Priority	2	Home Depot Garden Center
CEI-DOU-0175																									High	1	
CEI-DOU-0176	NHRIV70060607-22 Piscataquog River	E. coli, Hg, pH																							High	2	
CEI-DOU-0177																									High	2	
CEI-DOU-0178																									Low	0	
CEI-DOU-0179																									High	1	Tecomet
CEI-DOU-0181																									Low	0	
CEI-DOU-0182																									Low	0	
CEI-DOU-0183																									Low	0	
CEI-DOU-0184																									2nd Priority	3	
CEI-DOU-0186																									Low	0	
CEI-DOU-0187																									Low	0	
CEI-DOU-0188																									High	1	
CEI-DOU-0189	NHRIV70060803-14-02 Merrimack River	E. coli, Hg, Aluminum, pH																							High	2	WWTP
CEI-DOU-0191																									Low	2	South Manchester Trail
CEI-DOU-0192																									Low	0	
CEI-DOU-0193																									Low	2	Green Acres Elementary School Field
CEI-DOU-0194																									Low	1	
CEI-DOU-0195																									Low	1	
CEI-DOU-0196																									Low	1	
CEI-DOU-0197																									Low	1	
CEI-DOU-0198																									Low	1	
CEI-DOU-0199																									Low	1	
CEI-DOU-0200																									Low	1	
CEI-DOU-0201																									Low	3	
CEI-DOU-0202																									Low	1	
CEI-DOU-0203																									Low	1	
CEI-DOU-0204																									Low	1	
CEI-DOU-0205																									Low	3	
CEI-DOU-0206																											
CEI-DOU-0207																											
CEI-DOU-0208																											
CEI-DOU-0209																											
CEI-DOU-0211																											
CEI-DOU-0212																											
CEI-DOU-0213																											
CEI-DOU-0214																											
CEI-DOU-0215																											
CEI-DOU-0216																											
CEI-DOU-0218																											
CEI-DOU-0219																											
CEI-DOU-0220																											
CEI-DOU-0221																											
CEI-DOU-0223																											
CEI-DOU-0224																											
CEI-DOU-0225																											

Manchester, NH IDDE Outfall Classification and Ranking, By Outfall ID # - Revised December 2023

Outfall ID	Receiving Water	Receiving Water Impairment ¹	Top Priority		Second Priority		Problem		High Priority Outfalls															Excluded		Ranking		Notes							
			Ammonia ≥ 0.5 mg/L, surfactants ≥ 0.25 mg/L, and bacteria $> WQ$ criteria	Ammonia ≥ 0.5 mg/L, surfactants > 0.25 mg/L, and detectable levels of chlorine	Ammonia > 0.5 mg/L	Surfactants > 0.25 mg/L	Chlorine > 0 mg/L	Bacteria $> WQ$ criteria	Known or suspected contributions of illicit discharges	Olfactory or visual evidence of sewage	Discharge to/near public beach	Discharge to/near recreational area	Discharge to/near drinking water supply	Discharge to/near shellfish beds	Past Discharge Complaints	Car dealers	Car washes	Gas stations	Garden centers	Industrial manufacturing areas	Other	Industrial areas >40 years old	Sewer areas >40 years old	Catchment areas serviced by septic systems converted to sewer	Historic combined sewer system that has been separated	Density of septic systems ≥ 30 years old in residential land use	Culverted stream lengths greater than a simple roadway crossing		Discharge to impaired water & potential to carry that pollutant	Presence of older industrial operations	Roadway drainage in undeveloped areas with no dwellings and no sanitary sewers	Outfall is drainage for athletic fields, parks or undeveloped green space & associated parking without services	Cross-country drainage alignments through undeveloped land	Overall Ranking (Top Priority, 2nd Priority, Problem, High, Low, Excluded)	Ranking Score (Number of Boxes Checked)
DOU-101724																																	Low	0	
DOU-101738	NHRIV700060703-05 Cohas Brook - Long Pond Brook	E. coli, Hg, Habitat Assessment, Benthic, pH																															High	1	
DOU-102009																																	High	1	
DOU-102020																																	Low	0	
DOU-102021																																	High	1	
DOU-102058						x	x																									2nd Priority	3		
DOU-102121																																	High	3	Mobil and Shell gas stations
DOU-102148																																	High	2	Schleuniger Inc. machining manufacturer
DOU-102193																																2nd Priority	3	Calef Road Fire Station, combined sewer area	
DOU-102239																																	High	1	
DOU-102240																																	High	2	
DOU-102244																																	High	1	
DOU-102245																																	High	1	
DOU-102249						x	x																										2nd Priority	6	Sunbelt Equipment Rentals, E&R Laundry&Dry Cleaners, FiveStar ServiCenter auto repair shop
DOU-102397						x	x																										2nd Priority	3	Strip Mall (Chuck E. Cheese, Texas Roadhouse, Hobby Lobby, Staples, Jared)
DOU-102399																																	High	1	Team Nissan
DOU-102404																																	Low	0	
DOU-102413							x	x																									2nd Priority	4	CarMax, Ira Toyota
DOU-102433																																	Low	0	
DOU-102527	NHRIV700060803-15 Humphrey Brook	Chloride, Hg																															High	2	
DOU-102546	NHRIV700060803-14-02 Merrimack River	E. coli, Hg, Aluminum, pH																															2nd Priority	2	E. Coli-1300 CFU/100ml (NHDES 2005, MER-3040)
DOU-102632																																	High	1	AHC Corporation - Truck Dealer
DOU-102648	NHLAK700060703-04 Pine Island Pond	Chlorophyll-a, DO, Hg, pH, Cyanobacteria hepatotoxic microcystins																														2nd Priority	2		
DOU-102655	NHLAK700060703-04 Pine Island Pond	Chlorophyll-a, DO, Hg, pH, Cyanobacteria hepatotoxic microcystins																															High	1	
DOU-102656	NHLAK700060703-04 Pine Island Pond	Chlorophyll-a, DO, Hg, pH, Cyanobacteria hepatotoxic microcystins					x																										2nd Priority	2	
DOU-102736																																	High	1	MEGA-X gas station
DOU-102737																																	2nd Priority	3	Sanmina Corporation electronics manufacturer
DOU-102767																																	2nd Priority	3	
DOU-102806																																	High	1	
DOU-102810																																	High	1	
DOU-102813	Unnamed pond near end of Primrose Dr	None																															High	1	
DOU-102827																																	Low	0	
DOU-102841																																	High	1	
DOU-102844																																	High	2	Millennium Precision machine shop
DOU-102870																																	Low	0	
DOU-102872																																	Low	0	
DOU-102901																																	Low	0	
DOU-102909																																	High	1	
DOU-102954																																	High	1	
DOU-103026																																	2nd Priority	4	
DOU-103079	NHRIV700060803-17 Unnamed Brook tributary to Merrimack River below dam	Hg																															High	1	
DOU-103080	NHRIV700060803-17 Unnamed Brook tributary to Merrimack River below dam	Hg																															High	1	
DOU-103196	NHRIV700060803-14-02 Merrimack River	E. coli, Hg, Aluminum, pH																															2nd Priority	4	
DOU-103197	NHRIV700060803-14-02 Merrimack River	E. coli, Hg, Aluminum, pH																															High	2	
DOU-103199																																	High	2	
DOU-103234																																	High	1	
DOU-103449	NHRIV700060803-08 Baker Brook	Chloride, Hg																															High	2	
DOU-103591	NHRIV700060703-05 Cohas Brook - Long Pond Brook	E. coli, Hg, Habitat Assessment, Benthic, pH																															High	2	

Manchester, NH IDDE Outfall Classification and Ranking, By Outfall ID # - Revised December 2023

Outfall ID	Receiving Water	Receiving Water Impairment ¹	Top Priority		Second Priority			Problem		High Priority Outfalls													Excluded		Ranking		Notes											
			Ammonia ≥ 0.5 mg/L, surfactants ≥ 0.25 mg/L, and bacteria > WQ criteria	Ammonia ≥ 0.5 mg/L, surfactants > 0.25 mg/L, and detectable levels of chlorine	Ammonia > 0.5 mg/L	Surfactants > 0.25 mg/L	Chlorine > 0 mg/L	Bacteria > WQ criteria	Known or suspected contributions of illicit discharges	Olfactory or visual evidence of sewage	Discharge to/near public beach	Discharge to/near recreational area	Discharge to/near drinking water supply	Discharge to/near shellfish beds	Past Discharge Complaints	Density of Generating Sites*					Age of			Catchment areas serviced by septic systems converted to sewer	Historic combined sewer system that has been separated	Density of septic systems ≥30 years old in residential land use		Culverted stream lengths greater than a simple roadway crossing	Discharge to impaired water & potential to carry that pollutant	Presence of older industrial operations	Roadway drainage in undeveloped areas with no dwellings and no sanitary sewers	Outfall is drainage for athletic fields, parks or undeveloped green space & associated parking without services	Cross-country drainage alignments through undeveloped land	Overall Ranking (Top Priority, 2nd Priority, Problem, High, Low, Excluded)	Ranking Score (Number of Boxes Checked)			
																Car dealers	Car washes	Gas stations	Garden centers	Industrial manufacturing areas	Other	Industrial areas >40 years old	Sewer areas >40 years old															
DOU-111619					x	x																												2nd Priority	4	Derryfield County Club/Golf Course		
DOU-111713	NHRIV700060803-07 Humphrey Brook to Stevens Pond	Hg																																High	1			
DOU-111714	NHRIV700060803-07 Humphrey Brook to Stevens Pond	Hg																																High	1			
DOU-111718	NHRIV700060803-07 Humphrey Brook to Stevens Pond	Hg																																High	1			
DOU-111719	NHRIV700060803-07 Humphrey Brook to Stevens Pond	Hg																																High	1			
DOU-111728							x																											2nd Priority	2			
DOU-111737																																		High	1			
DOU-111743																																		Low	0			
DOU-111745																																		Low	0			
DOU-111747																																		Low	0			
DOU-111749																																		Low	0			
DOU-111756	NHRIV700060803-07 Humphrey Brook to Stevens Pond	Hg																																High	1			
DOU-111764	NHRIV700060803-07 Humphrey Brook to Stevens Pond	Hg																																High	1			
DOU-111786																																		High	1			
DOU-111787																																		High	1			
DOU-111797					x	x																												2nd Priority	2			
DOU-111799																																		High	1			
DOU-111817																																		High	2	Mammoth Road Fire Station 10		
DOU-111825																																		High	1			
DOU-111863																																		High	1	Stevens Pond Park/Tom Padden Field		
DOU-112131	NHRIV700060803-15 Humphrey Brook	Chloride, Hg																																High	2			
DOU-112136	NHRIV700060803-15 Humphrey Brook	Chloride, Hg																																	High	2		
DOU-112137	NHRIV700060803-15 Humphrey Brook	Chloride, Hg					x																												2nd Priority	2		
DOU-112207	Unnamed wetland on Joseph St Ext	None																																	Low	0		
DOU-112208	Unnamed pond south of Phillip St	None																																	High	2	Grace Limousine	
DOU-112212	Unnamed pond south of Phillip St	None																																High	1			
DOU-112214	Unnamed pond south of Phillip St	None																																Low	0			
DOU-112418	NHRIV700060801-05-02 Black Brook	Hg, Benthics, pH																																	High	3	Blodget Park, JJ'sAuto Sales and Repair	
DOU-112419	Unnamed wetland in Blodget park	None																																	High	1	Blodget Park	
DOU-112421	NHRIV700060801-05-02 Black Brook	Hg, Benthics, pH																																	High	1		
DOU-112425																																						
DOU-112459	NHIMP700060802-04 Merrimack River - Amoskeag Dam	E. coli, Hg	x			x	x																												Top Priority	6		
DOU-112471																																			Low	0		
DOU-112501	NHIMP700060802-04 Merrimack River - Amoskeag Dam	E. coli, Hg		x		x	x	x																											Top Priority	6	Sunoco	
DOU-112529																																			High	1		
DOU-112612	NHRIV700060802-15 Rays Brook - Dorrs Pond Outlet Stream	Chloride, E. coli, Hg																																		High	4	Cumberland Farms, Cleary Cleaners, Budget Gas and Garage
DOU-112715	NHRIV700060801-05-02 Black Brook	Hg, Benthics, pH																																		High	1	
DOU-112802	NHRIV700060803-14-01 Merrimack River - Amoskeag Dam Bypass	Hg																																		High	1	Army National Guard vehicle lot
DOU-112819																																			High	1		
DOU-112865																																			Low	0		
DOU-112867																																			Low	0		
DOU-112883	NHIMP700060802-04 Merrimack River - Amoskeag Dam	E. coli, Hg																																		High	2	WhyNotLeaselt, LLC corporate campus/parking lot
DOU-113328																																				High	1	
DOU-113347																																				High	1	
DOU-113348					x	x	x	x																												Top Priority	5	
DOU-113349																																				High	1	

Manchester, NH IDDE Outfall Classification and Ranking, By Outfall ID # - Revised December 2023

Outfall ID	Receiving Water	Receiving Water Impairment ¹	Top Priority	Second Priority			Problem		High Priority Outfalls															Excluded			Ranking		Notes												
			Ammonia ≥ 0.5 mg/L, surfactants ≥ 0.25 mg/L, and bacteria > WQ criteria	Ammonia ≥ 0.5 mg/L, surfactants > 0.25 mg/L, and detectable levels of chlorine	Ammonia > 0.5 mg/L	Surfactants > 0.25 mg/L	Chlorine > 0 mg/L	Bacteria > WQ criteria	Known or suspected contributions of illicit discharges	Olfactory or visual evidence of sewage	Discharge to/near public beach	Discharge to/near recreational area	Discharge to/near drinking water supply	Discharge to/near shellfish beds	Past Discharge Complaints	Density of Generating Sites ²					Age of		Catchment areas serviced by septic systems converted to sewer	Historic combined sewer system that has been separated	Density of septic systems ≥30 years old in residential land use	Culverted stream lengths greater than a simple roadway crossing	Discharge to impaired water & potential to carry that pollutant	Presence of older industrial operations		Roadway drainage in undeveloped areas with no dwellings and no sanitary sewers	Outfall is drainage for athletic fields, parks or undeveloped green space & associated parking without services	Cross-country drainage alignments through undeveloped land	Overall Ranking (Top Priority, 2nd Priority, Problem, High, Low, Excluded)	Ranking Score (Number of Boxes Checked)							
																Car dealers	Car washes	Gas stations	Garden centers	Industrial manufacturing areas	Other	Industrial areas >40 years old													Sewer areas >40 years old						
DOU-113350																																						Low	0		
DOU-113356																																						Low	0		
DOU-113370	NHRIV700060803-07 Humphrey Brook to Stevens Pond	Hg																																			Low	0			
DOU-113634																																						Low	0		
DOU-113650	NHRIV700060803-07 Humphrey Brook to Stevens Pond	Hg																																				Low	0		
DOU-113652	NHRIV700060803-07 Humphrey Brook to Stevens Pond	Hg																																				High	1		
DOU-113653																																						Low	0		
DOU-113664																																						Low	0		
DOU-113689																																						Low	0		
DOU-113708	NHRIV700060803-07 Humphrey Brook to Stevens Pond	Hg																																				Low	0		
DOU-113709	NHRIV700060803-07 Humphrey Brook to Stevens Pond	Hg																																				Low	0		
DOU-113733	Unnamed wetland off Eastern Ave	None																																				Low	0		
DOU-113778																																						Low	0		
DOU-113800																																						Low	0		
DOU-114030																																						High	1		
DOU-114042	NHRIV700060703-08 Cohas Brook	Hg, pH																																				High	1		
DOU-114150	NHRIV700060702-04 Unnamed tributary to Lake Massabesic	Hg																																				Low	0		
DOU-114153	NHRIV700060702-04 Unnamed tributary to Lake Massabesic	Hg																																				High	1		
DOU-114154																																						High	1		
DOU-114161	NHRIV700060702-04 Unnamed tributary to Lake Massabesic	Hg																																				Low	0		
DOU-114162																																						Low	0		
DOU-114267																																						High	1		
DOU-114275	NHRIV700060702-04 Unnamed tributary to Lake Massabesic	Hg																																				Low	0		
DOU-114276	NHRIV700060702-04 Unnamed tributary to Lake Massabesic	Hg																																				High	1		
DOU-114286																																						2nd Priority	2		
DOU-114294																																						Low	0		
DOU-114337																																						2nd Priority	2	NHDOT Shed	
DOU-114338																																						High	1	114339	
DOU-114339																																						High	2	NHDOT Shed	
DOU-114459	NHRIV700060702-04 Unnamed tributary to Lake Massabesic	Hg																																				2nd Priority	2		
DOU-114460	NHRIV700060702-04 Unnamed tributary to Lake Massabesic	Hg																																				2nd Priority	2		
DOU-114541																																						2nd Priority	2		
DOU-114592	NHIMP700060802-04 Merrimack River - Amoskeag Dam	E. coli, Hg																																				High	2		
DOU-114594	NHIMP700060802-04 Merrimack River - Amoskeag Dam	E. coli, Hg																																				High	1		
DOU-114635																																									
DOU-114665																																							High	2	Z1 Xpress
DOU-114666	NHRIV700060801-05-02 Black Brook	Hg, Benthics, pH																																				High	1		
DOU-114753																																									
DOU-114775	NHIMP700060802-04 Merrimack River - Amoskeag Dam	E. coli, Hg																																				High	1		
DOU-114778																																							Low	0	
DOU-114866	NHLAK700060802-01 Dorrs Pond	Chloride, Chlorophyll-a, DO, P, Hg																																				High	1		

Manchester, NH IDDE Outfall Classification and Ranking, By Outfall ID # - Revised December 2023

Outfall ID	Receiving Water	Receiving Water Impairment ¹	Top Priority		Second Priority		Problem		High Priority Outfalls																	Excluded			Ranking		Notes										
			Ammonia ≥ 0.5 mg/L, surfactants ≥ 0.25 mg/L, and bacteria > WQ criteria	Ammonia ≥ 0.5 mg/L, surfactants > 0.25 mg/L, and detectable levels of chlorine	Ammonia > 0.5 mg/L	Surfactants > 0.25 mg/L	Chlorine > 0 mg/L	Bacteria > WQ criteria	Known or suspected contributions of illicit discharges	Olfactory or visual evidence of sewage	Discharge to/near public beach	Discharge to/near recreational area	Discharge to/near drinking water supply	Discharge to/near shellfish beds	Past Discharge Complaints	Car dealers	Car washes	Gas stations	Garden centers	Industrial manufacturing areas	Other	Industrial areas >40 years old	Sewer areas >40 years old	Catchment areas serviced by septic systems converted to sewer	Historic combined sewer system that has been separated	Density of septic systems ≥30 years old in residential land use	Culverted stream lengths greater than a simple roadway crossing	Discharge to impaired water & potential to carry that pollutant	Presence of older industrial operations	Roadway drainage in undeveloped areas with no dwellings and no sanitary sewers		Outfall is drainage for athletic fields, parks or undeveloped green space & associated parking without services	Cross-country drainage alignments through undeveloped land	Overall Ranking (Top Priority, 2nd Priority, Problem, High, Low, Excluded)	Ranking Score (Number of Boxes Checked)						
DOU-114951	NHRIV700060802-13 Dorrs Pond Inlet Brook	Chloride, Hg																																			High	2	Strip Mall		
DOU-114952	NHRIV700060802-13 Dorrs Pond Inlet Brook	Chloride, Hg																																			High	2			
DOU-114953	NHRIV700060802-13 Dorrs Pond Inlet Brook	Chloride, Hg																																			High	3	Strip Mall		
DOU-114955	NHRIV700060802-13 Dorrs Pond Inlet Brook	Chloride, Hg			x	x																															2nd Priority	3			
DOU-114984	NHRIV700060802-16 Dorrs Pond-E Inlet	Chloride, Hg					x																														2nd Priority	3			
DOU-114994	NHRIV700060802-16 Dorrs Pond-E Inlet	Chloride, Hg					x																														2nd Priority	3			
DOU-115008	NHRIV700060802-30 Unnamed tributary to Goldfish Pond	Hg					x																														2nd Priority	1			
DOU-115013					x	x																															2nd Priority	4	Sunoco		
DOU-115018	NHLAK700060802-04 Goldfish Pond	None																																			Low	0			
DOU-115021																																						High	1		
DOU-115035	NHRIV700060802-13 Dorrs Pond Inlet Brook	Chloride, Hg					x																															2nd Priority	3		
DOU-115072	NHRIV700060802-30 Unnamed tributary to Goldfish Pond	Hg					x																															2nd Priority	3		
DOU-115141																																						Low	0		
DOU-115196																																							High	1	
DOU-115197	Unnamed wetland in corner of Mammoth and Smyth Rds	None																																				High	1		
DOU-115198	Unnamed wetland in corner of Mammoth and Smyth Rds	None																																				High	1		
DOU-115199	Unnamed wetland in corner of Mammoth and Smyth Rds	None																																				Low	0		
DOU-115243	NHRIV700060802-30 Unnamed tributary to Goldfish Pond	Hg																																				Low	0		
DOU-115247																																						High	2	U-Haul Moving and Storage, Discharges to Manchester North Soccer Field	
DOU-115304																																						Low	0		
DOU-115342																																						Low	0		
DOU-115345							x		x																													2nd Priority	2		
DOU-115348																																						Low	0		
DOU-115360																																						High	1		
DOU-115363																																						Low	0		
DOU-115464	NHIMP700060802-04 Merrimack River - Amoskeag Dam	E. coli, Hg																																				High	1		
DOU-115486	NHRIV700060802-10 Milestone Brook - Unnamed Brook	Hg					x																															2nd Priority	2		
DOU-115503							x		x	x																													2nd Priority	4	
DOU-115589	NHRIV700060802-10 Milestone Brook - Unnamed Brook	Hg																																				Low	0		
DOU-115616																																						High	1		
DOU-115673																																						High	1		
DOU-115691	NHIMP700060802-04 Merrimack River - Amoskeag Dam	E. coli, Hg																																				High	1		
DOU-115878				x		x		x	x																													Top Priority	5		
DOU-115889																																						Low	0		
DOU-115943																																						Low	0		
DOU-115945																																						High	1		
DOU-115992	NHRIV700060802-30 Unnamed tributary to Goldfish Pond	Hg																																				Low	0		
DOU-116003	NHRIV700060802-17 Unnamed tributary to Ledoux Dam	Hg																																				Low	0		
DOU-116028																																							Low	0	
DOU-116083																																						High	1	Wellhead Protection Area - POULTRY PRODUCTS	

Manchester, NH IDDE Outfall Classification and Ranking, By Outfall ID # - Revised December 2023

Outfall ID	Receiving Water	Receiving Water Impairment ¹	Top Priority		Second Priority			Problem		High Priority Outfalls															Excluded		Ranking		Notes									
			Ammonia ≥ 0.5 mg/L, surfactants ≥ 0.25 mg/L, and bacteria > WQ criteria	Ammonia ≥ 0.5 mg/L, surfactants > 0.25 mg/L, and detectable levels of chlorine	Ammonia > 0.5 mg/L	Surfactants > 0.25 mg/L	Chlorine > 0 mg/L	Bacteria > WQ criteria	Known or suspected contributions of illicit discharges	Olfactory or visual evidence of sewage	Discharge to/near public beach	Discharge to/near recreational area	Discharge to/near drinking water supply	Discharge to/near shellfish beds	Past Discharge Complaints	Car dealers	Car washes	Gas stations	Garden centers	Industrial manufacturing areas	Other	Industrial areas >40 years old	Sewer areas >40 years old	Catchment areas serviced by septic systems converted to sewer	Historic combined sewer system that has been separated	Density of septic systems ≥30 years old in residential land use	Culverted stream lengths greater than a simple roadway crossing	Discharge to impaired water & potential to carry that pollutant		Presence of older industrial operations	Roadway drainage in undeveloped areas with no dwellings and no sanitary sewers	Outfall is drainage for athletic fields, parks or undeveloped green space & associated parking without services	Cross-country drainage alignments through undeveloped land	Overall Ranking (Top Priority, 2nd Priority, Problem, High, Low, Excluded)	Ranking Score (Number of Boxes Checked)			
DOU-116123	NHRIV700060802-14-02 Merrimack River	None																																High	1			
DOU-116126	Unnamed tributary to Merrimack River above dam	None				x																												2nd Priority	2	Wellhead Protection Area - POULTRY PRODUCTS		
DOU-116157																																						
DOU-116158																																						
DOU-116205																																						
DOU-116224							x	x																														
DOU-116263											x																											
DOU-116271																																						
DOU-116289																																						
DOU-116327	NHRIV700060802-11 Unnamed tributary to Merrimack River	Hg																																				
DOU-116349																																						
DOU-116357																																						
DOU-116372							x	x	x																													
DOU-116374																																						
DOU-116380	NHRIV700060802-11 Unnamed tributary to Merrimack River	Hg																																				
DOU-116491																																						
DOU-116495																																						
DOU-116496																																						
DOU-116503																																						
DOU-116506																																						
DOU-116513																																						
DOU-116517	NHRIV700060802-10 Milestone Brook - Unnamed Brook	Hg																																				
DOU-116536	NHRIV700060802-10 Milestone Brook - Unnamed Brook	Hg																																				
DOU-116539	NHRIV700060802-10 Milestone Brook - Unnamed Brook	Hg																																				
DOU-116542																																						
DOU-116545																																						
DOU-116640	NHRIV700060607-22 Piscataquog River	E. coli, Hg, pH					x																															
DOU-116753																																						
DOU-116870	NHRIV700060607-22 Piscataquog River	E. coli, Hg, pH	x		x	x		x																														
DOU-116966																																						
DOU-116978																																						
DOU-117017																																						
DOU-117026	NHRIV700060802-10 Milestone Brook - Unnamed Brook	Hg									x																											
DOU-117040	NHRIV700060804-06 Unnamed Brook to Merrimack River	Hg					x																															
DOU-117087							x	x																														
DOU-117183	NHRIV700060607-22 Piscataquog River	E. coli, Hg, pH																																				
DOU-117291	NHRIV700060607-22 Piscataquog River	E. coli, Hg, pH																																				
DOU-117480	NHRIV700060703-08 Cohas Brook	Hg, pH																																				
DOU-117681	NHRIV700060703-05 Cohas Brook - Long Pond Brook	E. coli, Hg, Habitat Assessment, Benthic, pH																																				
DOU-117699																																						
DOU-117713																																						
DOU-117717																																						
DOU-117947																																						
DOU-117950	NHRIV700060803-14-02 Merrimack River	E. coli, Hg, Aluminum, pH																																				
DOU-117951	NHRIV700060803-14-02 Merrimack River	E. coli, Hg, Aluminum, pH																																				
DOU-117952	NHRIV700060803-14-02 Merrimack River	E. coli, Hg, Aluminum, pH																																				
DOU-117955																																						
DOU-118117																																						

Manchester, NH IDDE Outfall Classification and Ranking, By Outfall ID # - Revised December 2023

Outfall ID	Receiving Water	Receiving Water Impairment ¹	Top Priority		Second Priority			Problem		High Priority Outfalls														Excluded			Ranking		Notes									
			Ammonia ≥ 0.5 mg/L, surfactants ≥ 0.25 mg/L, and bacteria > WQ criteria	Ammonia ≥ 0.5 mg/L, surfactants > 0.25 mg/L, and detectable levels of chlorine	Ammonia > 0.5 mg/L	Surfactants > 0.25 mg/L	Chlorine > 0 mg/L	Bacteria > WQ criteria	Known or suspected contributions of illicit discharges	Offactory or visual evidence of sewage	Discharge to/near public beach	Discharge to/near recreational area	Discharge to/near drinking water supply	Discharge to/near shellfish beds	Past Discharge Complaints	Density of Generating Sites*						Age of		Catchment areas serviced by septic systems converted to sewer	Historic combined sewer system that has been separated	Density of septic systems ≥30 years old in residential land use	Culverted stream lengths greater than a simple roadway crossing	Discharge to impaired water & potential to carry that pollutant		Presence of older industrial operations	Roadway drainage in undeveloped areas with no dwellings and no sanitary sewers	Outfall is drainage for athletic fields, parks or undeveloped green space & associated parking without services	Cross-country drainage alignments through undeveloped land	Overall Ranking (Top Priority, 2nd Priority, Problem, High, Low, Excluded)	Ranking Score (Number of Boxes Checked)			
																Car dealers	Car washes	Gas stations	Garden centers	Industrial manufacturing areas	Other	Industrial areas >40 years old	Sewer areas >40 years old															
DOU-118118	NHRIV700060801-05-02 Black Brook	Hg, Benthics, pH																																	High	2	Manchester Solid Waste Dropoff Facility, disturbed land	
DOU-118182	NHRIV700060803-14-02 Merrimack River	E. coli, Hg, Aluminum, pH				x	x															x													2nd Priority	7	Mobil, D&L Auto Repair Service Center, Comet Auto Sales, J&M	
DOU-118256																																			High	1		
DOU-118259																																			High	1		
DOU-118290	NHRIV700060703-06 Unnamed tributary to Cohas Brook	Hg																																	Low	0		
DOU-118314	NHRIV700060702-12 Unnamed tributary to Lake Massabesic	Hg																																	High	2	Wellhead Protection Area - Rockwood Terrace Condos	
DOU-118316	NHRIV700060702-12 Unnamed tributary to Lake Massabesic	Hg									x																								Low	0		
DOU-118325	NHRIV700060703-06 Unnamed tributary to Cohas Brook	Hg																																	Low	0	118326	
DOU-118326	NHRIV700060703-06 Unnamed tributary to Cohas Brook	Hg																																	Low	0		
DOU-118327	NHRIV700060703-06 Unnamed tributary to Cohas Brook	Hg																																	Low	0	118326	
DOU-118421																																			Low	0		
DOU-118442																																			Low	0		
DOU-118443	Unnamed wetland by Candia Rd opposite Youngsville Park	None																																	Low	0		
DOU-118445																																			Low	0		
DOU-118450	NHRIV700060702-04 Unnamed tributary to Lake Massabesic	Hg																																	Low	0		
DOU-118457	NHRIV700060702-04 Unnamed tributary to Lake Massabesic	Hg																																	High	1		
DOU-118458																																			High	2	Granite State Collision Center, Kane's Auto Sales&Service	
DOU-118463								x	x																										2nd Priority	4	Kane's Auto Sales&Service, Circle T Car Wash	
DOU-118501																																			Low	0		
DOU-118525	NHRIV700060703-08 Cohas Brook	Hg, pH																																	High	1		
DOU-118693	NHRIV700060703-05 Cohas Brook - Long Pond Brook	E. coli, Hg, Habitat Assessment, Benthic, pH																																	High	1		
DOU-118722	NHRIV700060703-05 Cohas Brook - Long Pond Brook	E. coli, Hg, Habitat Assessment, Benthic, pH																																	High	1		
DOU-118723	NHRIV700060703-05 Cohas Brook - Long Pond Brook	E. coli, Hg, Habitat Assessment, Benthic, pH																																	High	2		
DOU-118732																																			High	1		
DOU-118739	NHRIV700060703-05 Cohas Brook - Long Pond Brook	E. coli, Hg, Habitat Assessment, Benthic, pH																																	High	2		
DOU-118782																																			High	1		
DOU-118803						x	x																												2nd Priority	3		
DOU-118805	Unnamed wetland on Surrey Ln	None																																		High	2	FW Webb Company Distribution Center - Disturbed land
DOU-118841																																			High	1		
DOU-118855																																			High	1		
DOU-118861																																			High	1		
DOU-118893																																			High	1		
DOU-118938																																			High	1		
DOU-118939																																			High	1		
DOU-118942																																			High	1		
DOU-118945																																			Low	0		
DOU-118949																																			Low	0		
DOU-118960																																			Low	0		
DOU-118974	NHRIV700060803-15 Humphrey Brook	Chloride, Hg																																	High	3	East Sid e Plaza strip mall	
DOU-118975	NHRIV700060803-15 Humphrey Brook	Chloride, Hg																																	High	1		
DOU-118978	Unnamed wetland on rail trail behind East Side Plaza	None																																	High	2	Rockingham Recreational Trail	
DOU-118988	NHRIV700060703-08 Cohas Brook	Hg, pH																																	High	1		
DOU-119072																																						
DOU-119223	NHRIV700060803-14-02 Merrimack River	E. coli, Hg, Aluminum, pH		x		x	x	x																												Top Priority	5	E. Coli -100 CFU/100ml. Sewage smell (NHDES 2005, MER-
DOU-119224	NHRIV700060803-14-02 Merrimack River	E. coli, Hg, Aluminum, pH					x																												2nd Priority	4	Pine Grove Cemetery, E. Coli -50 CFU/100ml	

Manchester, NH IDDE Outfall Classification and Ranking, By Outfall ID # - Revised December 2023

Outfall ID	Receiving Water	Receiving Water Impairment ¹	Top Priority		Second Priority			Problem		High Priority Outfalls												Excluded			Ranking		Notes										
			Ammonia ≥ 0.5 mg/L, surfactants ≥ 0.25 mg/L, and bacteria > WQ criteria	Ammonia ≥ 0.5 mg/L, surfactants > 0.25 mg/L, and detectable levels of chlorine	Ammonia > 0.5 mg/L	Surfactants > 0.25 mg/L	Chlorine > 0 mg/L	Bacteria > WQ criteria	Known or suspected contributions of illicit discharges	Olfactory or visual evidence of sewage	Discharge to/near public beach	Discharge to/near recreational area	Discharge to/near drinking water supply	Discharge to/near shellfish beds	Past Discharge Complaints	Density of Generating Sites ²					Age of		Catchment areas serviced by septic systems converted to sewer	Historic combined sewer system that has been separated	Density of septic systems ≥30 years old in residential land use	Culverted stream lengths greater than a simple roadway crossing		Discharge to impaired water & potential to carry that pollutant	Presence of older industrial operations	Roadway drainage in undeveloped areas with no dwellings and no sanitary sewers	Outfall is drainage for athletic fields, parks or undeveloped green space & associated parking without services	Cross-country drainage alignments through undeveloped land	Overall Ranking (Top Priority, 2nd Priority, Problem, High, Low, Excluded)	Ranking Score (Number of Boxes Checked)			
																Car dealers	Car washes	Gas stations	Garden centers	Industrial manufacturing areas	Other	Industrial areas >40 years old													Sewer areas >40 years old		
DOU-119233	NHIMP700060802-04 Merrimack River - Amoskeag Dam	E. coli, Hg																																	High	2	
DOU-119261	NHRIV700060802-15 Rays Brook - Dorrs Pond Outlet Stream	Chloride, E. coli, Hg																																	High	1	
DOU-119296	NHRIV700060607-22 Piscataquog River	E. coli, Hg, pH																																	2nd Priority	4	Gill's Automotive
DOU-119298																																			2nd Priority	2	
DOU-119311	NHRIV700060803-14-02 Merrimack River	E. coli, Hg, Aluminum, pH																																	High	3	Motorway Engineering Co machine shop
DOU-119318																																			2nd Priority	2	
DOU-119328	NHRIV700060802-16 Dorrs Pond-E Inlet	Chloride, Hg																																	2nd Priority	2	
DOU-119441																																			Low	0	
DOU-119460																																			Low	0	
DOU-119464	NHRIV700060702-04 Unnamed tributary to Lake Massabesic	Hg																																	Low	0	
DOU-119480	NHRIV700060803-15 Humphrey Brook	Chloride, Hg																																	High	2	
DOU-119484	NHRIV700060803-15 Humphrey Brook	Chloride, Hg																																	High	1	
DOU-119724	NHRIV700060607-22 Piscataquog River	E. coli, Hg, pH																																	High	5	Manchester Fire Department Station 6, Shop Drop & Dry
DOU-119741																																			Low	0	
DOU-119747																																			Low	0	
DOU-119767																																			Low	0	
DOU-119770																																			Low	0	
DOU-119786	Unnamed Stream																																		High	1	Quirk Kia
DOU-119787																																			High	2	Liberty International Trucks of NH, LLC
DOU-119793																																			2nd Priority	1	
DOU-119800																																			2nd Priority	1	
DOU-119801																																			High	1	
DOU-119808	NHRIV700060703-05 Cohas Brook - Long Pond Brook	E. coli, Hg, Habitat Assessment, Benthic, pH																																	High	2	
DOU-119809																																			Low	0	
DOU-119838																																			Low	0	
DOU-119856	NHRIV700060803-07 Humphrey Brook to Stevens Pond	Hg																																	Low	0	
DOU-119861																																			Low	0	
DOU-119870	NHRIV700060803-07 Humphrey Brook to Stevens Pond	Hg																																	High	1	
DOU-119873																																			Low	0	
DOU-119879																																			High	1	
DOU-119880																																			High	1	
DOU-119881																																			High	1	
DOU-119888																																			High	1	
DOU-119901																																			High	1	
DOU-119950	NHRIV700060803-14-02 Merrimack River	E. coli, Hg, Aluminum, pH																																	2nd Priority	4	General Cable manufacturer
DOU-119989																																			High	1	Anderson Equipment Company equipment rentals
DOU-119994																																			Low	0	
DOU-119998																																			Low	0	
DOU-121044																																			Low	0	
DOU-121046	NHRIV700060703-06 Unnamed tributary to Cohas Brook	Hg																																Low	0		
DOU-121047	NHRIV700060703-06 Unnamed tributary to Cohas Brook	Hg																																	2nd Priority	1	
DOU-121092																																			Low	0	
DOU-121203																																			Low	0	
DOU-121528																																			Low	0	
DOU-121530																																			Low	0	
DOU-121547	NHRIV700060703-08 Cohas Brook	Hg, pH																																	2nd Priority	2	
DOU-121573	NHRIV700060703-08 Cohas Brook	Hg, pH																																	High	2	Byrnes Automotive
DOU-121582																																			Low	0	
DOU-121584																																			Low	0	

Manchester, NH IDDE Outfall Classification and Ranking, By Outfall ID # - Revised December 2023

Outfall ID	Receiving Water	Receiving Water Impairment ¹	Top Priority		Second Priority			Problem		High Priority Outfalls														Excluded			Ranking		Notes										
			Ammonia ≥ 0.5 mg/L, surfactants ≥ 0.25 mg/L, and bacteria > WQ criteria	Ammonia ≥ 0.5 mg/L, surfactants > 0.25 mg/L, and detectable levels of chlorine	Ammonia > 0.5 mg/L	Surfactants > 0.25 mg/L	Chlorine > 0 mg/L	Bacteria > WQ criteria	Known or suspected contributions of illicit discharges	Olfactory or visual evidence of sewage	Discharge to/near public beach	Discharge to/near recreational area	Discharge to/near drinking water supply	Discharge to/near shellfish beds	Past Discharge Complaints	Density of Generating Sites ²					Age of		Catchment areas serviced by septic systems converted to sewer	Historic combined sewer system that has been separated	Density of septic systems ≥30 years old in residential land use	Culverted stream lengths greater than a simple roadway crossing	Discharge to impaired water & potential to carry that pollutant	Presence of older industrial operations		Roadway drainage in undeveloped areas with no dwellings and no sanitary sewers	Outfall is drainage for athletic fields, parks or undeveloped green space & associated parking without services	Cross-country drainage alignments through undeveloped land	Overall Ranking (Top Priority, 2nd Priority, Problem, High, Low, Excluded)	Ranking Score (Number of Boxes Checked)					
																Car dealers	Car washes	Gas stations	Garden centers	Industrial manufacturing areas	Other	Industrial areas >40 years old													Sewer areas >40 years old				
DOU-121585	NHRIV700060703-08 Cohas Brook	Hg, pH																																	High	2			
DOU-121591																																			Low	0			
DOU-121594	NHRIV700060702-04 Unnamed tributary to Lake Massabesic	Hg																																	Low	0			
DOU-121598	NHRIV700060702-04 Unnamed tributary to Lake Massabesic	Hg																																	Low	0			
DOU-121600	NHRIV700060702-04 Unnamed tributary to Lake Massabesic	Hg																																	Low	0			
DOU-121607																																			High	1			
DOU-121609																																			High	1			
DOU-121613																																			2nd Priority	2			
DOU-121622	NHRIV700060702-04 Unnamed tributary to Lake Massabesic	Hg																																		2nd Priority	3		
DOU-121625	NHRIV700060702-04 Unnamed tributary to Lake Massabesic	Hg																																		High	1	Granite State Collision Center	
DOU-121633	NHRIV700060804-06 Unnamed Brook to Merrimack River	Hg																																	High	1			
DOU-121638	NHRIV700060804-06 Unnamed Brook to Merrimack River	Hg																																	Low	0			
DOU-121646																																			High	1	Demers Garden Center		
DOU-121656	NHRIV700060804-05 Little Cohas Brook - Unnamed Brook	Chloride, DO, Benthic, Iron, pH, Hg																																		2nd Priority	3	USPS Freight Service Center	
INT-1																																			Low	0			
INT-10																																			High	1			
INT-11																																			Low	0			
INT-17																																				2nd Priority	3	Mobile	
INT-29																																							
INT-32																																				2nd Priority	2		
INT-33																																				High	1	Gulf Gas	
INT-36																																							
INT-38																																							
INT-43																																					High	5	Valhalla Circuits Corp, Real Deal Auto, Manchester Gas
INT-46																																				Low	0		
INT-47																																				High	1	Quirk Kia	
INT-51																																				High	2	Speedway Gas	
INT-55																																				High	1	Gulf Gas	
INT-56																																				Low	0		
INT-58																																				Low	0		
INT-6																																				Low	0		

Notes:
 1. DO = Dissolved oxygen, Hg = Mercury in fish tissue, Solids = Foam, flocs, scum, oil slicks, Benthic = Benthic Macroinvertebrate Bioassessments (Streams)
 2. Locations of gas stations, car dealerships, car washes and garden centers obtained from Google in April 2019.

Outlets of Long Culverts
 Same Drainage Network Discharges to Multiple Outfalls
 Swale Outlet

Manchester, NH Vulnerability Assessment - Revised December 2023

Outfall ID	Ward Location	Required SVFs										Recommended SVFs				Notes	
		History of SSOs	Common or twin-invert manholes serving storm & sanitary sewer alignments	Common trench construction serving storm & sanitary sewer alignments	Crossings of storm & sanitary sewer alignments where the sanitary system is shallower than the storm drain system	Sanitary sewer alignments known or suspected to have been constructed with an underdrain system	Inadequate sanitary sewer level of service (LOS) resulting in regular surcharging, customer back-ups, or frequent customer complaints	Areas formerly served by combined sewer systems	Sanitary sewer infrastructure defects (e.g., leaking service laterals, cracked, broken, or offset sanitary infrastructure, directly piped connections between storm drain and sanitary sewer infrastructure, or other vulnerability factors identified through I/I, etc.)	Wet Weather Sampling Required? (Y or N)	Sewer pump/lift stations, siphons, sewer restrictions where power/equipment failures or blockages could result in SSOs	Sanitary sewer & storm drain infrastructure >40 years old	Age of oldest sewer pipe in catchment	Widespread code-required septic system upgrades required at property transfers due to inadequate soils, water table separation or other physical constraints rather than poor owner maintenance	History of multiple BOH actions addressing widespread septic system failures due to inadequate soils, water table separation, or other physical constraints, rather than poor owner maintenance		Drainage and Sanitary Manholes within 1' of each other
CB-101240																	
CB-101774	9								x	Yes		x	1966				
CB-105237																	
CB-105238																	
CB-105239																	
CB-105338																	
CB-105344																	
CB-105345																	
CB-105354	9				x				x	Yes		x	1908				
CB-105419	9				x					Yes		x	1901				
CB-105422	9									No		x	1922				
CB-106066	9				x				x	Yes		x	1922				
CB-112469	1								x	Yes		x	1886				
CB-112643	1									No		x	1892				
CB-113111	1				x					Yes		x	1895				
CB-117356	9									No		x	1917				
CB-119026	1									No		x	1926				
CB-119736	1				x					Yes		x	1895				
CEI-CB-0025																	
CEI-CB-06252021-1	10							x		Yes		x	1954				
CEI-CB-92221	1									No		x	1938				
CEI-DOU-0001	3									No		x	1974				
CEI-DOU-0007	9									No		x	1938				
CEI-DOU-0010	3									No							
CEI-DOU-0011	3									No							
CEI-DOU-0012	3				x				x	Yes		x	1894				
CEI-DOU-0013	3									No		x	1922				
CEI-DOU-0014	3									No		x	1973				
CEI-DOU-0015	1									No		x	1965				
CEI-DOU-0016	1									No		x	1965				
CEI-DOU-0018	6									No			2007				
CEI-DOU-0019	6									No							
CEI-DOU-0020	6									No			2012				
CEI-DOU-0024	8									No			1981				
CEI-DOU-0025	6									No			1989				
CEI-DOU-0026	8				x					Yes			1984				
CEI-DOU-0027	1									No		x	1965				
CEI-DOU-0028	6									No							
CEI-DOU-0029	8									No		x	1971				
CEI-DOU-0030	8									No		x	1977				
CEI-DOU-0031	6									No			1993				
CEI-DOU-0032	2									No			1984				
CEI-DOU-0033	2									No			1984				
CEI-DOU-0034	2									No			1984				
CEI-DOU-0035	6									No			1989				
CEI-DOU-0036	2									No			1984				
CEI-DOU-0037	6									No			1989				
CEI-DOU-0038	4									No		x	1966				

Manchester, NH Vulnerability Assessment - Revised December 2023

Outfall ID	Ward Location	Required SVFs										Recommended SVFs				Notes
		History of SSOs	Common or twin-invert manholes serving storm & sanitary sewer alignments	Common trench construction serving storm & sanitary sewer alignments	Crossings of storm & sanitary sewer alignments where the sanitary system is shallower than the storm drain system	Sanitary sewer alignments known or suspected to have been constructed with an underdrain system	Inadequate sanitary sewer level of service (LOS) resulting in regular surcharging, customer back-ups, or frequent customer complaints	Areas formerly served by combined sewer systems	Sanitary sewer infrastructure defects (e.g., leaking service laterals, cracked, broken, or offset sanitary infrastructure, directly piped connections between storm drain and sanitary sewer infrastructure, or other vulnerability factors identified through I/I, etc.)	Wet Weather Sampling Required? (Y or N)	Sewer pump/lift stations, siphons, sewer restrictions where power/equipment failures or blockages could result in SSOs	Sanitary sewer & storm drain infrastructure >40 years old	Age of oldest sewer pipe in catchment	Widespread code-required septic system upgrades required at property transfers due to inadequate soils, water table separation or other physical constraints rather than poor owner maintenance	History of multiple BOH actions addressing widespread septic system failures due to inadequate soils, water table separation, or other physical constraints, rather than poor owner maintenance	
CEI-DOU-0039	4								No		x	1968				
CEI-DOU-0040	6								No							
CEI-DOU-0041	8								No			1999				
CEI-DOU-0042	8								No			2002				
CEI-DOU-0043	2								No							
CEI-DOU-0044	1			x					Yes		x	1965				
CEI-DOU-0045	8								No			1987				
CEI-DOU-0046	1				x				Yes			2006				
CEI-DOU-0047	8								No							
CEI-DOU-0048	8								No			1999				
CEI-DOU-0049	8								No			1999				
CEI-DOU-0050	6							x	Yes		x	1976				
CEI-DOU-0051	11				x		x		Yes		x	1890				
CEI-DOU-0052	8								No			1989				
CEI-DOU-0053	6				x				Yes		x	1968				
CEI-DOU-0054	8								No			1999				
CEI-DOU-0055	8								No							
CEI-DOU-0056	6				x				Yes		x	1970				
CEI-DOU-0057	6								No			2007				
CEI-DOU-0058	6								No							
CEI-DOU-0059	8				x				Yes		x	1947				
CEI-DOU-0060	8								No							
CEI-DOU-0062	8								No			1995				
CEI-DOU-0063	8								No							
CEI-DOU-0064	8								No							
CEI-DOU-0065	8								No			1985				
CEI-DOU-0066	8							x	Yes		x	1901				
CEI-DOU-0067	8				x				Yes		x	1976				
CEI-DOU-0068	8				x				Yes			2000				
CEI-DOU-0069	8								No			1983				
CEI-DOU-0070	8								No			2005				
CEI-DOU-0075	1								No							
CEI-DOU-0076	1								No		x	1979				
CEI-DOU-0077	1				x			x	Yes		x	1973				
CEI-DOU-0078	11							x	Yes			2000				
CEI-DOU-0079	10				x				Yes		x	1931				
CEI-DOU-0080	12								No			1986				
CEI-DOU-0081	10							x	Yes		x	1892				
CEI-DOU-0082	9								No							
CEI-DOU-0083	9				x				Yes		x	1923				
CEI-DOU-0084	8								No							
CEI-DOU-0085	8								No							
CEI-DOU-0086	8								No							
CEI-DOU-0087	8								No							
CEI-DOU-0088	8								No							
CEI-DOU-0089	9								No			Unknown				
CEI-DOU-0090	9								No		x	1974				
CEI-DOU-0091	1								No							

Manchester, NH Vulnerability Assessment - Revised December 2023

Outfall ID	Ward Location	Required SVFs										Recommended SVFs				Notes
		History of SSOs	Common or twin-invert manholes serving storm & sanitary sewer alignments	Common trench construction serving storm & sanitary sewer alignments	Crossings of storm & sanitary sewer alignments where the sanitary system is shallower than the storm drain system	Sanitary sewer alignments known or suspected to have been constructed with an underdrain system	Inadequate sanitary sewer level of service (LOS) resulting in regular surcharging, customer back-ups, or frequent customer complaints	Areas formerly served by combined sewer systems	Sanitary sewer infrastructure defects (e.g., leaking service laterals, cracked, broken, or offset sanitary infrastructure, directly piped connections between storm drain and sanitary sewer infrastructure, or other vulnerability factors identified through I/I, etc.)	Wet Weather Sampling Required? (Y or N)	Sewer pump/lift stations, siphons, sewer restrictions where power/equipment failures or blockages could result in SSOs	Sanitary sewer & storm drain infrastructure >40 years old	Age of oldest sewer pipe in catchment	Widespread code-required septic system upgrades required at property transfers due to inadequate soils, water table separation or other physical constraints rather than poor owner maintenance	History of multiple BOH actions addressing widespread septic system failures due to inadequate soils, water table separation, or other physical constraints, rather than poor owner maintenance	
CEI-DOU-0092	1									No						
CEI-DOU-0093	12				x					Yes		x	1937			
CEI-DOU-0094	10									No						
CEI-DOU-0095	6									No		x	1976			
CEI-DOU-0096	10									No			1992			
CEI-DOU-0097	6									No		x	1976			
CEI-DOU-0098	1									No						
CEI-DOU-0099	1									No						
CEI-DOU-0100	8				x				x	Yes		x	1937			
CEI-DOU-0101	8			x						Yes			1987			
CEI-DOU-0102	8									No			1987			
CEI-DOU-0103	8									No			1987			
CEI-DOU-0104	9									No						
CEI-DOU-0105	9									No						
CEI-DOU-0106	9									No						
CEI-DOU-0107	8									No			2000			
CEI-DOU-0108	8									No			1987			
CEI-DOU-0109	8									No						
CEI-DOU-0110	6									No		x	1970			
CEI-DOU-0111	6									No						
CEI-DOU-0112	6									No			1998			
CEI-DOU-0113	6									No			2007			
CEI-DOU-0114	6									No		x	1968			
CEI-DOU-0115	6									No			2007			
CEI-DOU-0116	6									No			2007			
CEI-DOU-0117	6									No			2002			
CEI-DOU-0118	6									No			1997			
CEI-DOU-0119	9									No		x	1966			
CEI-DOU-0120	8									No			1999			
CEI-DOU-0122	8									No						
CEI-DOU-0123	8									No						
CEI-DOU-0126	6									No						
CEI-DOU-0127	6									No						
CEI-DOU-0128	6									No						
CEI-DOU-0129	6									No						
CEI-DOU-0130	6									No						
CEI-DOU-0131	6									No			2007			
CEI-DOU-0132	6									No			2007			
CEI-DOU-0133	6									No						
CEI-DOU-0134	6									No		x	1958			
CEI-DOU-0135	4									No		x	1950			
CEI-DOU-0136	4									No						
CEI-DOU-0137	9				x					Yes		x	1968			
CEI-DOU-0138	12									No						
CEI-DOU-0139	12									No						
CEI-DOU-0140	12									No		x	1974			
CEI-DOU-0141	12									No			2013			
CEI-DOU-0142	12									No						

Manchester, NH Vulnerability Assessment - Revised December 2023

Outfall ID	Ward Location	Required SVFs										Recommended SVFs				Notes	
		History of SSOs	Common or twin-invert manholes serving storm & sanitary sewer alignments	Common trench construction serving storm & sanitary sewer alignments	Crossings of storm & sanitary sewer alignments where the sanitary system is shallower than the storm drain system	Sanitary sewer alignments known or suspected to have been constructed with an underdrain system	Inadequate sanitary sewer level of service (LOS) resulting in regular surcharging, customer back-ups, or frequent customer complaints	Areas formerly served by combined sewer systems	Sanitary sewer infrastructure defects (e.g., leaking service laterals, cracked, broken, or offset sanitary infrastructure, directly piped connections between storm drain and sanitary sewer infrastructure, or other vulnerability factors identified through I/I, etc.)	Wet Weather Sampling Required? (Y or N)	Sewer pump/lift stations, siphons, sewer restrictions where power/equipment failures or blockages could result in SSOs	Sanitary sewer & storm drain infrastructure >40 years old	Age of oldest sewer pipe in catchment	Widespread code-required septic system upgrades required at property transfers due to inadequate soils, water table separation or other physical constraints rather than poor owner maintenance	History of multiple BOH actions addressing widespread septic system failures due to inadequate soils, water table separation, or other physical constraints, rather than poor owner maintenance		Drainage and Sanitary Manholes within 1' of each other
CEI-DOU-0143	12									No							
CEI-DOU-0144	12									No							
CEI-DOU-0145	12									No							
CEI-DOU-0146	12									No							
CEI-DOU-0147	6									No		2007					
CEI-DOU-0148	6									No	x	1970					
CEI-DOU-0149	4									No	x	1928					
CEI-DOU-0150	11									No	x	1959					
CEI-DOU-0151	12									No							
CEI-DOU-0152	11									No	x	1971					
CEI-DOU-0153	8									No							
CEI-DOU-0154	4									No	x	1954					
CEI-DOU-0155	4									No		1988					
CEI-DOU-0156	8									No	x	1969					
CEI-DOU-0157	3									No	x	1976					
CEI-DOU-0158	11									No							
CEI-DOU-0159	10									No							
CEI-DOU-0160	3									No	x	1888					
CEI-DOU-0161	10									No	x	1923					
CEI-DOU-0162	10									No		1992					
CEI-DOU-0163	2									No							
CEI-DOU-0164	9									No	x	1939					
CEI-DOU-0165	9									No	x	1974					
CEI-DOU-0166	8									No							
CEI-DOU-0167	6									No							
CEI-DOU-0168	8				x					Yes		1988					
CEI-DOU-0169	8									No	x	1963					
CEI-DOU-0170	8									No							
CEI-DOU-0172	8									No	x	1971					
CEI-DOU-0173	1							x		Yes		1962					
CEI-DOU-0174	1									No							
CEI-DOU-0175	12									No	x	1930					
CEI-DOU-0176	10							x		Yes		1991					
CEI-DOU-0177	12							x		Yes	x	1948					
CEI-DOU-0178	6									No		2001					
CEI-DOU-0179	8									No		1987					
CEI-DOU-0181	12									No		1988					
CEI-DOU-0182	9									No							
CEI-DOU-0183	12									No							
CEI-DOU-0184	4									No	x	1968					
CEI-DOU-0186	9									No		2003					
CEI-DOU-0187	8									No							
CEI-DOU-0188	10									Yes	x	1900					
CEI-DOU-0189	8									No		1985					
CEI-DOU-0191	9									No	x	1959					
CEI-DOU-0192	8									No							
CEI-DOU-0193	8									No	x	1955					x
CEI-DOU-0194	8									No	x	1939					

Manchester, NH Vulnerability Assessment - Revised December 2023

Outfall ID	Ward Location	Required SVFs										Recommended SVFs				Notes
		History of SSOs	Common or twin-invert manholes serving storm & sanitary sewer alignments	Common trench construction serving storm & sanitary sewer alignments	Crossings of storm & sanitary sewer alignments where the sanitary system is shallower than the storm drain system	Sanitary sewer alignments known or suspected to have been constructed with an underdrain system	Inadequate sanitary sewer level of service (LOS) resulting in regular surcharging, customer back-ups, or frequent customer complaints	Areas formerly served by combined sewer systems	Sanitary sewer infrastructure defects (e.g., leaking service laterals, cracked, broken, or offset sanitary infrastructure, directly piped connections between storm drain and sanitary sewer infrastructure, or other vulnerability factors identified through I/I, etc.)	Wet Weather Sampling Required? (Y or N)	Sewer pump/lift stations, siphons, sewer restrictions where power/equipment failures or blockages could result in SSOs	Sanitary sewer & storm drain infrastructure >40 years old	Age of oldest sewer pipe in catchment	Widespread code-required septic system upgrades required at property transfers due to inadequate soils, water table separation or other physical constraints rather than poor owner maintenance	History of multiple BOH actions addressing widespread septic system failures due to inadequate soils, water table separation, or other physical constraints, rather than poor owner maintenance	
CEI-DOU-0195	8								No		x	1939				
CEI-DOU-0196									No		x	1914				
CEI-DOU-0197	1								No		x	1936				
CEI-DOU-0198	1								No		x	1951				
CEI-DOU-0199	1								No		x	1976				
CEI-DOU-0200	1								No		x	1911				
CEI-DOU-0201	1								No		x	1965				
CEI-DOU-0202	8								No		x	1951				
CEI-DOU-0203	11								No		x	1934				
CEI-DOU-0204	6								No		x	1922				
CEI-DOU-0205																
CEI-DOU-0206																
CEI-DOU-0207																
CEI-DOU-0208																
CEI-DOU-0209																
CEI-DOU-0211																
CEI-DOU-0212																
CEI-DOU-0213																
CEI-DOU-0214																
CEI-DOU-0215																
CEI-DOU-0216																
CEI-DOU-0218																
CEI-DOU-0219																
CEI-DOU-0220																
CEI-DOU-0221																
CEI-DOU-0223																
CEI-DOU-0224																
CEI-DOU-0225																
CEI-DOU-0226																
CEI-DOU-0227																
CEI-DOU-0228																
CEI-DOU-0229																
CEI-DOU-0230																
CEI-DOU-0231																
CEI-DOU-0237																
DMH-101773	9								No		x					
DMH-102101	8								No							
DMH-102531	8					x		x	Yes		x	1934				
DMH-103408	9								No		x	1919				
DMH-104094	8								No			1995				
DMH-105233	10				x				Yes			1988				
DMH-105258	10					x		x	Yes			1995				
DMH-105259	10				x				Yes			1985				
DMH-105291	9								No			1995				
DMH-105326	10				x				Yes			1988				
DMH-105342																
DMH-105346	10								No			1988				
DMH-105347	10					x		x	Yes			1982				

Manchester, NH Vulnerability Assessment - Revised December 2023

Outfall ID	Ward Location	Required SVFs										Recommended SVFs				Notes
		History of SSOs	Common or twin-invert manholes serving storm & sanitary sewer alignments	Common trench construction serving storm & sanitary sewer alignments	Crossings of storm & sanitary sewer alignments where the sanitary system is shallower than the storm drain system	Sanitary sewer alignments known or suspected to have been constructed with an underdrain system	Inadequate sanitary sewer level of service (LOS) resulting in regular surcharging, customer back-ups, or frequent customer complaints	Areas formerly served by combined sewer systems	Sanitary sewer infrastructure defects (e.g., leaking service laterals, cracked, broken, or offset sanitary infrastructure, directly piped connections between storm drain and sanitary sewer infrastructure, or other vulnerability factors identified through I/I, etc.)	Wet Weather Sampling Required? (Y or N)	Sewer pump/lift stations, siphons, sewer restrictions where power/equipment failures or blockages could result in SSOs	Sanitary sewer & storm drain infrastructure >40 years old	Age of oldest sewer pipe in catchment	Widespread code-required septic system upgrades required at property transfers due to inadequate soils, water table separation or other physical constraints rather than poor owner maintenance	History of multiple BOH actions addressing widespread septic system failures due to inadequate soils, water table separation, or other physical constraints, rather than poor owner maintenance	
DMH-105348	10				x		x		x	Yes		1988				
DMH-106045	9									No		1995				
DMH-113068																
DMH-113841										No		1988				Same catchment as DOU-118314 catchment
DMH-117096	1									No	x	1977				
DMH-118224																
DMH-118313																
DMH-119288	9									No		1971				
DOU-101018	8				x					Yes	x	1937				
DOU-101025	8				x					Yes	x	1959				
DOU-101116	8									No		1959				
DOU-101117	8			x						Yes		1987				
DOU-101124	8									No	x	1939				
DOU-101150	8									No		1990				
DOU-101157	8				x					Yes		1990				
DOU-101201	8				x					Yes		1990				
DOU-101220	8									No		1990				
DOU-101245	8									No		1990				
DOU-101257	8									No		1998				
DOU-101259	8				x					Yes		1998				
DOU-101286	8				x					Yes		2000				
DOU-101362	8									No		2007				
DOU-101411	8							x		Yes	x	1958				
DOU-101443	9				x		x			Yes		1979				
DOU-101446	9									No	x	1927				
DOU-101651	8									No	x	1962				
DOU-101670	8									No	x	1966				
DOU-101709	6									No	x	1966				
DOU-101713	6				x					Yes	x	1962				
DOU-101716	6									No	x	1959				
DOU-101724	6									No		1997				
DOU-101738	6									No						
DOU-102009	8				x					Yes	x	1975				
DOU-102020	8									No		1986				
DOU-102021	8				x					Yes	x	1975				
DOU-102058	6			x						Yes	x	1960				
DOU-102121	8							x		Yes	x	1939				
DOU-102148	8									No	x	1937			x	
DOU-102193	9				x		x	x		Yes	x	1964				
DOU-102239	9							x		Yes	x	1969				
DOU-102240	9						x			Yes	x	1969				
DOU-102244	9									No	x	1969				
DOU-102245	9						x			Yes		1989				
DOU-102249	9							x		Yes	x	1971				
DOU-102397	8									No		1987				
DOU-102399	8									No		1989				
DOU-102404	8									No		1993				
DOU-102413	8							x		Yes		1993				

Manchester, NH Vulnerability Assessment - Revised December 2023

Outfall ID	Ward Location	Required SVFs										Recommended SVFs				Notes
		History of SSOs	Common or twin-invert manholes serving storm & sanitary sewer alignments	Common trench construction serving storm & sanitary sewer alignments	Crossings of storm & sanitary sewer alignments where the sanitary system is shallower than the storm drain system	Sanitary sewer alignments known or suspected to have been constructed with an underdrain system	Inadequate sanitary sewer level of service (LOS) resulting in regular surcharging, customer back-ups, or frequent customer complaints	Areas formerly served by combined sewer systems	Sanitary sewer infrastructure defects (e.g., leaking service laterals, cracked, broken, or offset sanitary infrastructure, directly piped connections between storm drain and sanitary sewer infrastructure, or other vulnerability factors identified through I/I, etc.)	Wet Weather Sampling Required? (Y or N)	Sewer pump/lift stations, siphons, sewer restrictions where power/equipment failures or blockages could result in SSOs	Sanitary sewer & storm drain infrastructure >40 years old	Age of oldest sewer pipe in catchment	Widespread code-required septic system upgrades required at property transfers due to inadequate soils, water table separation or other physical constraints rather than poor owner maintenance	History of multiple BOH actions addressing widespread septic system failures due to inadequate soils, water table separation, or other physical constraints, rather than poor owner maintenance	
DOU-102433	8								No			1987				
DOU-102527	8								Yes			1987				
DOU-102546	8								Yes			1990				
DOU-102632	8				x				Yes			1990				
DOU-102648	8				x				Yes							
DOU-102655	8							x	Yes							
DOU-102656	8								No							
DOU-102736	8								No			1988				
DOU-102737	8				x				Yes		x	1929				
DOU-102767	8								No		x	1964				
DOU-102806	6								No			1958				
DOU-102810	6				x				Yes		x	1933				
DOU-102813	6								No		x	1973				
DOU-102827	8								No							
DOU-102841	8								No		x	1975				
DOU-102844	8								No		x	1943				
DOU-102870	6								No			1989				
DOU-102872	6								No			1989				
DOU-102901	12								No							
DOU-102909	12								No		x	1936				
DOU-102954	12			x					Yes		x	1973				
DOU-103026	9				x			x	Yes		x	1939				
DOU-103079	9							x	No		x	1959				
DOU-103080	8								Yes		x	1931				
DOU-103196	9				x			x	Yes		x	1923				
DOU-103197	9								Yes							History of 2 SSOs assumed to have entered MS4 from SMH 302691 & SMH 302695 in past 6 years
DOU-103199	9	x						x	No		x	1961				
DOU-103234	8								No		x	1970				
DOU-103449	9								No		x	1970				
DOU-103591	8								No		x	1961				
DOU-103592	6								No		x	1961				
DOU-103595	6								No							
DOU-103615	6								No		x	1960				
DOU-103706	10							x	Yes		x	1961				
DOU-103748	9								No			1986				
DOU-103773	8								Yes							
		x			x							2001				History of 2 SSOs from SMH 302127 in past 6 years, both contained on the property and therefore did not enter MS4
DOU-103790	9							x	Yes		x	1970				
DOU-103844	9								No			1987				
DOU-103847	9				x				Yes		x	1977				
DOU-104040	8								No		x	1977				
DOU-104046	8								No		x	1970				
DOU-104049	8				x				Yes		x	1938				
DOU-104053	8								No		x	1896				
DOU-104056	8								No			1999				
DOU-104058	8								No			2002				

Manchester, NH Vulnerability Assessment - Revised December 2023

Outfall ID	Ward Location	Required SVFs										Recommended SVFs				Notes
		History of SSOs	Common or twin-invert manholes serving storm & sanitary sewer alignments	Common trench construction serving storm & sanitary sewer alignments	Crossings of storm & sanitary sewer alignments where the sanitary system is shallower than the storm drain system	Sanitary sewer alignments known or suspected to have been constructed with an underdrain system	Inadequate sanitary sewer level of service (LOS) resulting in regular surcharging, customer back-ups, or frequent customer complaints	Areas formerly served by combined sewer systems	Sanitary sewer infrastructure defects (e.g., leaking service laterals, cracked, broken, or offset sanitary infrastructure, directly piped connections between storm drain and sanitary sewer infrastructure, or other vulnerability factors identified through I/I, etc.)	Wet Weather Sampling Required? (Y or N)	Sewer pump/lift stations, siphons, sewer restrictions where power/equipment failures or blockages could result in SSOs	Sanitary sewer & storm drain infrastructure >40 years old	Age of oldest sewer pipe in catchment	Widespread code-required septic system upgrades required at property transfers due to inadequate soils, water table separation or other physical constraints rather than poor owner maintenance	History of multiple BOH actions addressing widespread septic system failures due to inadequate soils, water table separation, or other physical constraints, rather than poor owner maintenance	
DOU-104064	8								No			1989				
DOU-104065	8								No	x		1894				
DOU-104070	8				x				Yes	x		1891				
DOU-104084	8								No	x		1900				
DOU-104116	8								No	x		1919				
DOU-104208	9								No	x		1901				
DOU-104369																
DOU-104388	8								No	x		1911				
DOU-104392	8								No	x		1914				
DOU-104393	8								No	x		1947				
DOU-104508	10						x		Yes	x		1896				
DOU-104512	10						x		Yes	x		1965				
DOU-104676	8								No	x		1880				
DOU-104679	8								No	x		1877			x	
DOU-104690	6								No	x		1891				
DOU-105119	10						x		Yes	x		1935			x	
DOU-105128	10				x		x	x	Yes							
DOU-105268	10				x		x	x	Yes	x		1935				
DOU-105300	9							x	Yes	x		1923				
DOU-105301	9				x			x	Yes	x		1910				
DOU-105304	9							x	Yes	x		1905				
DOU-105324	10				x		x	x	Yes			1987				
DOU-105754	7				x		x	x	Yes			1987				
DOU-105911	6								No	x		1968				
DOU-105996	7				x		x	x	Yes			1987				
DOU-106006	6								No	x		1968				
DOU-106766																
DOU-106799	3				x				Yes			1987				
DOU-106823																
DOU-106941	3				x			x	Yes	x		1965				
DOU-107324	10				x		x	x	Yes	x		1965				
DOU-108210	5				x			x	Yes			2007				
DOU-108229	5								No			1983				
DOU-108237	5							x	Yes							
DOU-108284	5							x	Yes							
DOU-108305	6							x	Yes							
DOU-108654	5							x	Yes							
DOU-108712	6								No							
DOU-108713	6								No							
DOU-108718	6								No			2007				
DOU-108755	6								No			2007				
DOU-108823	6								No	x		1928				
DOU-108824	6								No	x		1970				
DOU-108832	6				x				Yes	x		1970				
DOU-108878	6								No	x		1970				
DOU-108880	6								No			2007				
DOU-108881	6								No	x		1974				
DOU-108901	8								No			1991				

Manchester, NH Vulnerability Assessment - Revised December 2023

Outfall ID	Ward Location	Required SVFs										Recommended SVFs				Notes
		History of SSOs	Common or twin-invert manholes serving storm & sanitary sewer alignments	Common trench construction serving storm & sanitary sewer alignments	Crossings of storm & sanitary sewer alignments where the sanitary system is shallower than the storm drain system	Sanitary sewer alignments known or suspected to have been constructed with an underdrain system	Inadequate sanitary sewer level of service (LOS) resulting in regular surcharging, customer back-ups, or frequent customer complaints	Areas formerly served by combined sewer systems	Sanitary sewer infrastructure defects (e.g., leaking service laterals, cracked, broken, or offset sanitary infrastructure, directly piped connections between storm drain and sanitary sewer infrastructure, or other vulnerability factors identified through I/I, etc.)	Wet Weather Sampling Required? (Y or N)	Sewer pump/lift stations, siphons, sewer restrictions where power/equipment failures or blockages could result in SSOs	Sanitary sewer & storm drain infrastructure >40 years old	Age of oldest sewer pipe in catchment	Widespread code-required septic system upgrades required at property transfers due to inadequate soils, water table separation or other physical constraints rather than poor owner maintenance	History of multiple BOH actions addressing widespread septic system failures due to inadequate soils, water table separation, or other physical constraints, rather than poor owner maintenance	
DOU-108902	6								No		x	1937				
DOU-108917	6								No		x	1895				
DOU-108923	6								No		x	1949				
DOU-108924	6								No		x	1973				
DOU-108925	8								No		x	1883				
DOU-108949	6				x				Yes		x	1948				
DOU-108978	6								No		x	1972				x
DOU-109052	4								No		x	1885				
DOU-109096																
DOU-109223	6								No		x	1912				
DOU-109224	6								No		x	1888				
DOU-109225	6								No		x	1900				
DOU-109237	6								No		x	1885				
DOU-109242	6								No		x	1954				
DOU-109256	6								No		x	1950				
DOU-109400	10								No							
DOU-109404	11				x		x	x	Yes							
DOU-109407	11				x		x		Yes							
DOU-109769	3								No		x	1968				
DOU-109916	11				x		x	x	Yes		x	1968				
DOU-110031	12						x		Yes		x	1968				
DOU-110291																
DOU-110309	3								No		x	1968				
DOU-110329	12								No		x	1968				
DOU-110349	3								Yes							History of 6 SSOs assumed to have entered MS4 from SMH 307518 in past 6 years
DOU-110363	3	x			x			x	Yes		x	1968				History of 11 SSOs assumed to have entered MS4 from SMH 307091 in past 6 years
DOU-110382	11				x		x	x	Yes		x	1967				
DOU-110501	10				x		x		Yes							
DOU-110768	11				x		x		Yes							
DOU-111614	4			x					Yes		x	1895				
DOU-111619	4				x				Yes		x	1968				
DOU-111713	4								No		x	1964				
DOU-111714	2								No		x	1964				
DOU-111718	2								No		x	1966				
DOU-111719	4								No		x	1936				
DOU-111728	2								No		x	1968				
DOU-111737	4								No		x	1954				
DOU-111743	2								No							
DOU-111745	4								No							
DOU-111747	4								No							
DOU-111749	2								No							
DOU-111756	4								No		x	1913				
DOU-111764	6				x				Yes		x	1972				
DOU-111786	4								No		x	1959				
DOU-111787	4								No		x	1973				
DOU-111797	2							x	Yes							

Manchester, NH Vulnerability Assessment - Revised December 2023

Outfall ID	Ward Location	Required SVFs										Recommended SVFs				Notes
		History of SSOs	Common or twin-invert manholes serving storm & sanitary sewer alignments	Common trench construction serving storm & sanitary sewer alignments	Crossings of storm & sanitary sewer alignments where the sanitary system is shallower than the storm drain system	Sanitary sewer alignments known or suspected to have been constructed with an underdrain system	Inadequate sanitary sewer level of service (LOS) resulting in regular surcharging, customer back-ups, or frequent customer complaints	Areas formerly served by combined sewer systems	Sanitary sewer infrastructure defects (e.g., leaking service laterals, cracked, broken, or offset sanitary infrastructure, directly piped connections between storm drain and sanitary sewer infrastructure, or other vulnerability factors identified through I/I, etc.)	Wet Weather Sampling Required? (Y or N)	Sewer pump/lift stations, siphons, sewer restrictions where power/equipment failures or blockages could result in SSOs	Sanitary sewer & storm drain infrastructure >40 years old	Age of oldest sewer pipe in catchment	Widespread code-required septic system upgrades required at property transfers due to inadequate soils, water table separation or other physical constraints rather than poor owner maintenance	History of multiple BOH actions addressing widespread septic system failures due to inadequate soils, water table separation, or other physical constraints, rather than poor owner maintenance	
DOU-111799	4								No	x	1956				x	
DOU-111817	4								No	x	1956					
DOU-111825	2								No	x	1886					
DOU-111863	4								No							
DOU-112131	4								No	x	1882					
DOU-112136	4								No	x	1939					
DOU-112137	4				x				Yes							
DOU-112207	12								No							
DOU-112208	12								No	x	1896					
DOU-112212	12								No	x	1968					
DOU-112214	12								No							
DOU-112418	12								No							
DOU-112419	12						x		Yes		1981					
DOU-112421	12						x		Yes		1981					
DOU-112425																
DOU-112459	1				x				Yes	x	1968					
DOU-112471	12								No		1981					
DOU-112501	12								No		1985					
DOU-112529	12								No	x	1969					
DOU-112612	1				x			x	Yes							
DOU-112715	12								No		1982					
DOU-112802	3				x			x	Yes							
DOU-112819	12								No	x	1968					
DOU-112865	12								No							
DOU-112867	12								No							
DOU-112883	3								No							
DOU-113328	2								No	x	1969					
DOU-113347	2								No	x	1968					
DOU-113348	2								No	x	1966					
DOU-113349	2				x				Yes	x	1968					
DOU-113350	2				x				Yes							
DOU-113356	2								No		2011					
DOU-113370	2								No		1988					
DOU-113634	6								No		1988					
DOU-113650	4								No		1988					
DOU-113652	4								No	x	1978					
DOU-113653	6								No		2012					
DOU-113664	2								No		1989					
DOU-113689	6								No		2012					
DOU-113708	6								No		1987					
DOU-113709	2								No		1997					
DOU-113733	6								No		2007					
DOU-113778	4								No							
DOU-113800	6								No		2012					
DOU-114030	6								No	x	1967					
DOU-114042	6				x				Yes		1989					
DOU-114150	2								No		1993					
DOU-114153	2								No	x	1974					

Manchester, NH Vulnerability Assessment - Revised December 2023

Outfall ID	Ward Location	Required SVFs										Recommended SVFs				Notes
		History of SSOs	Common or twin-invert manholes serving storm & sanitary sewer alignments	Common trench construction serving storm & sanitary sewer alignments	Crossings of storm & sanitary sewer alignments where the sanitary system is shallower than the storm drain system	Sanitary sewer alignments known or suspected to have been constructed with an underdrain system	Inadequate sanitary sewer level of service (LOS) resulting in regular surcharging, customer back-ups, or frequent customer complaints	Areas formerly served by combined sewer systems	Sanitary sewer infrastructure defects (e.g., leaking service laterals, cracked, broken, or offset sanitary infrastructure, directly piped connections between storm drain and sanitary sewer infrastructure, or other vulnerability factors identified through I/I, etc.)	Wet Weather Sampling Required? (Y or N)	Sewer pump/lift stations, siphons, sewer restrictions where power/equipment failures or blockages could result in SSOs	Sanitary sewer & storm drain infrastructure >40 years old	Age of oldest sewer pipe in catchment	Widespread code-required septic system upgrades required at property transfers due to inadequate soils, water table separation or other physical constraints rather than poor owner maintenance	History of multiple BOH actions addressing widespread septic system failures due to inadequate soils, water table separation, or other physical constraints, rather than poor owner maintenance	
DOU-114154	2				x					Yes	x	1974				
DOU-114161	2									No						
DOU-114162	6									No						
DOU-114267	6									No	x	1974				
DOU-114275	2									No						
DOU-114276	2									No	x	1930				
DOU-114286	6				x					Yes		1984				
DOU-114294	6									No		1984				
DOU-114337	6									No		1986				
DOU-114338										No	x	1956				Same catchment as DOU-114339 catchment
DOU-114339	6									No	x	1956				
DOU-114459	6									No		1979				
DOU-114460	2									No	x	1965				
DOU-114541	12						x			Yes	x	1965				
DOU-114592	12						x			Yes	x	1940				
DOU-114594	12									No		1984				
DOU-114635																
DOU-114665	12									No	x	1965				
DOU-114666	12									No		1986				
DOU-114753																
DOU-114775	12							x		Yes						
DOU-114778	12									No						
DOU-114866	1							x		Yes						
DOU-114951	1									No		1994				
DOU-114952	1									No	x	1965				
DOU-114953	1									No	x	1970				
DOU-114955	1									No						
DOU-114984	1							x		Yes						
DOU-114994	1							x		Yes						
DOU-115008	1							x		Yes						
DOU-115013	1									No	x	1978				
DOU-115018	1									No						
DOU-115021	1						x			Yes	x	1971				
DOU-115035	1									No	x	1974				
DOU-115072	1							x		Yes	x	1900				
DOU-115141	1									No		1980				
DOU-115196																
DOU-115197	2									No	x	1939				
DOU-115198	2									No	x	1900				
DOU-115199	2									No		1980				
DOU-115243	2				x					Yes		1987				
DOU-115247	1									No		1987				
DOU-115304	2									No		1986				
DOU-115342	1									No		1986				
DOU-115345	1									No		1994				
DOU-115348	2									No		1988				
DOU-115360	2				x			x		Yes	x	1974				
DOU-115363	2									No		1979				

Manchester, NH Vulnerability Assessment - Revised December 2023

Outfall ID	Ward Location	Required SVFs										Recommended SVFs				Notes
		History of SSOs	Common or twin-invert manholes serving storm & sanitary sewer alignments	Common trench construction serving storm & sanitary sewer alignments	Crossings of storm & sanitary sewer alignments where the sanitary system is shallower than the storm drain system	Sanitary sewer alignments known or suspected to have been constructed with an underdrain system	Inadequate sanitary sewer level of service (LOS) resulting in regular surcharging, customer back-ups, or frequent customer complaints	Areas formerly served by combined sewer systems	Sanitary sewer infrastructure defects (e.g., leaking service laterals, cracked, broken, or offset sanitary infrastructure, directly piped connections between storm drain and sanitary sewer infrastructure, or other vulnerability factors identified through I/I, etc.)	Wet Weather Sampling Required? (Y or N)	Sewer pump/lift stations, siphons, sewer restrictions where power/equipment failures or blockages could result in SSOs	Sanitary sewer & storm drain infrastructure >40 years old	Age of oldest sewer pipe in catchment	Widespread code-required septic system upgrades required at property transfers due to inadequate soils, water table separation or other physical constraints rather than poor owner maintenance	History of multiple BOH actions addressing widespread septic system failures due to inadequate soils, water table separation, or other physical constraints, rather than poor owner maintenance	
DOU-115464	1				x				x	Yes		1984				x
DOU-115486	12									No	x	1953				
DOU-115503	1				x				x	Yes	x	1939				
DOU-115589	12									No		1984				
DOU-115616	1								x	Yes	x	1939				x
DOU-115673	1				x				x	Yes	x	1963				
DOU-115691	12									No						
DOU-115878	1								x	Yes	x	1948				
DOU-115889	1									No		1986				
DOU-115943	1			x						Yes		1997				
DOU-115945	1									No	x	1939				
DOU-115992	2									No		1986				
DOU-116003	2				x					Yes		1988				
DOU-116028	2									No		1988				
DOU-116083	12									No		1988				
DOU-116123	1									No		1988				x
DOU-116126	12								x	Yes		1988				
DOU-116157																
DOU-116158																
DOU-116205	1									No		1988				
DOU-116224	1									No		1988				
DOU-116263	12									No		1988				
DOU-116271	1								x	Yes	x	1988				
DOU-116289	1									No	x	1988				
DOU-116327	1									No	x	1986				
DOU-116349	1								x	Yes	x	1930				
DOU-116357	1									No	x	1900				
DOU-116372	1				x					Yes	x	1891				
DOU-116374	1									No	x	1931				
DOU-116380	1				x					Yes	x	1931				
DOU-116491	12									No	x	1940				
DOU-116495	12									No		1986				
DOU-116496	12									No						
DOU-116503	12									No						
DOU-116506	12									No	x	1878				
DOU-116513	12									No	x	1905				
DOU-116517	12									No		1985				
DOU-116536	12									No	x	1970				
DOU-116539	12									No		2002				
DOU-116542	12									No		2002				
DOU-116545	12									No		2002				
DOU-116640	10				x			x		Yes		2002				
DOU-116753	11							x		Yes	x	1959				
DOU-116870	10							x		Yes						
DOU-116966	10							x		Yes						
DOU-116978	10							x		Yes						
DOU-117017	10							x		Yes						
DOU-117026	12							x		No						

Manchester, NH Vulnerability Assessment - Revised December 2023

Outfall ID	Ward Location	Required SVFs										Recommended SVFs				Notes
		History of SSOs	Common or twin-invert manholes serving storm & sanitary sewer alignments	Common trench construction serving storm & sanitary sewer alignments	Crossings of storm & sanitary sewer alignments where the sanitary system is shallower than the storm drain system	Sanitary sewer alignments known or suspected to have been constructed with an underdrain system	Inadequate sanitary sewer level of service (LOS) resulting in regular surcharging, customer back-ups, or frequent customer complaints	Areas formerly served by combined sewer systems	Sanitary sewer infrastructure defects (e.g., leaking service laterals, cracked, broken, or offset sanitary infrastructure, directly piped connections between storm drain and sanitary sewer infrastructure, or other vulnerability factors identified through I/I, etc.)	Wet Weather Sampling Required? (Y or N)	Sewer pump/lift stations, siphons, sewer restrictions where power/equipment failures or blockages could result in SSOs	Sanitary sewer & storm drain infrastructure >40 years old	Age of oldest sewer pipe in catchment	Widespread code-required septic system upgrades required at property transfers due to inadequate soils, water table separation or other physical constraints rather than poor owner maintenance	History of multiple BOH actions addressing widespread septic system failures due to inadequate soils, water table separation, or other physical constraints, rather than poor owner maintenance	
DOU-117040	8								No			2013				
DOU-117087	2								No			2013				
DOU-117183	10							x	Yes		x	1935				
DOU-117291	10							x	Yes			1984				
DOU-117480	8								No		x	1974				History of 1 SSO from SMH 302177 in past 6 years, assumed to not have entered MS4
DOU-117681	8				x				Yes		x	1968				
DOU-117699	8								No							
DOU-117713	8								No			1997				
DOU-117717	9	x						x	Yes							History of 2 SSOs from SMH 302925 in past 6 years, assumed to not have entered MS4
DOU-117947	9								No			2007				
DOU-117950									No			2007				Same catchment as DOU-117952 catchment
DOU-117951									No			2007				Same catchment as DOU-117952 catchment
DOU-117952	9								No							
DOU-117955	8								No			2007				
DOU-118117	12								No			2007				
DOU-118118	12								No			2007				
DOU-118182	10				x			x	Yes			2007				
DOU-118256	9								No		x	1977				
DOU-118259	6				x				Yes		x	1970				
DOU-118290	6								No			1989				
DOU-118314	6								x			1993				
DOU-118316	6								x			1993				
DOU-118325									No			1990				Same catchment as DOU-118326 catchment
DOU-118326	6								No			2002				
DOU-118327									No			1988				Same catchment as DOU-118326 catchment
DOU-118421	6								No			1988				
DOU-118442	6								No			1988				
DOU-118443	6								No			1984				
DOU-118445	6								No			2000				
DOU-118450	6								No			1984				
DOU-118457	6								No		x	1964				
DOU-118458	6								No			1987				
DOU-118463	6								No			1987				
DOU-118501	6								No			1987				
DOU-118501	6							x	Yes			1987				
DOU-118525	6								No			1987				
DOU-118693	6								Yes			1987				
DOU-118722	6				x				No			1987				
DOU-118723	6								No			1911				
DOU-118732	6								No		x	1935				
DOU-118739	8								No		x	1909				
DOU-118782	8								No		x	1970				
DOU-118803	8				x				Yes		x	1974				
DOU-118805	8								No		x	1929				
DOU-118841	2								No		x	1911				
DOU-118855	2								No		x	1894				
DOU-118861	2								No		x	1892				x

Manchester, NH Vulnerability Assessment - Revised December 2023

Outfall ID	Ward Location	Required SVFs										Recommended SVFs				Notes
		History of SSOs	Common or twin-invert manholes serving storm & sanitary sewer alignments	Common trench construction serving storm & sanitary sewer alignments	Crossings of storm & sanitary sewer alignments where the sanitary system is shallower than the storm drain system	Sanitary sewer alignments known or suspected to have been constructed with an underdrain system	Inadequate sanitary sewer level of service (LOS) resulting in regular surcharging, customer back-ups, or frequent customer complaints	Areas formerly served by combined sewer systems	Sanitary sewer infrastructure defects (e.g., leaking service laterals, cracked, broken, or offset sanitary infrastructure, directly piped connections between storm drain and sanitary sewer infrastructure, or other vulnerability factors identified through I/I, etc.)	Wet Weather Sampling Required? (Y or N)	Sewer pump/lift stations, siphons, sewer restrictions where power/equipment failures or blockages could result in SSOs	Sanitary sewer & storm drain infrastructure >40 years old	Age of oldest sewer pipe in catchment	Widespread code-required septic system upgrades required at property transfers due to inadequate soils, water table separation or other physical constraints rather than poor owner maintenance	History of multiple BOH actions addressing widespread septic system failures due to inadequate soils, water table separation, or other physical constraints, rather than poor owner maintenance	
DOU-118893	8								No	x	1925					
DOU-118938	8								No	x	1974					
DOU-118939	8								No	x	1966					
DOU-118942	8								No	x	1965					
DOU-118945	8								No							
DOU-118949	8								No		1997					
DOU-118960	8				x				Yes		1997					
DOU-118974	5							x	Yes	x	1896					
DOU-118975	5								No							
DOU-118978	5							x	Yes	x	1881				x	
DOU-118988	6								No		1994					
DOU-119072	9								No		1994					
DOU-119223	9								No		1994					
DOU-119224	9						x	x	Yes		2002					
DOU-119233	1						x		Yes		2002					
DOU-119261	1							x	Yes		2003					
DOU-119296	11				x		x	x	Yes		2003					
DOU-119298	11				x		x	x	Yes		2006					
DOU-119311	3								No	x	1936					
DOU-119318	9								No		1987					
DOU-119328	1								No		1989					
DOU-119441	6								No							
DOU-119460	6								No		1984					
DOU-119464	6								No		1984					
DOU-119480	8				x		x	x	Yes		2002					
DOU-119484	8								No		2002					
DOU-119724	11				x		x	x	Yes		2002					
DOU-119741	1								No		2002					
DOU-119747	1								No		2002					
DOU-119767	2								No		1984					
DOU-119770	2				x				Yes		1984					
DOU-119786	8								No		2005					
DOU-119787	8								No	x	1883					
DOU-119793	2				x				Yes		2011					
DOU-119800	8								No		2009					
DOU-119801	8								No	x	1965				x	
DOU-119808	6								No	x	1973					
DOU-119809	6								No		2007					
DOU-119838	2				x				Yes		2002					
DOU-119856	2				x				Yes		2011					
DOU-119861	2				x				Yes							
DOU-119870	2								No	x	1957					
DOU-119873	2								No		1993					
DOU-119879	2				x				Yes	x	1970					
DOU-119880	2				x				Yes	x	1970					
DOU-119881	2								No	x	1970					
DOU-119888	2								No	x	1970					
DOU-119901	12							x	Yes		1987					

Manchester, NH Vulnerability Assessment - Revised December 2023

Outfall ID	Ward Location	Required SVFs										Recommended SVFs				Notes
		History of SSOs	Common or twin-invert manholes serving storm & sanitary sewer alignments	Common trench construction serving storm & sanitary sewer alignments	Crossings of storm & sanitary sewer alignments where the sanitary system is shallower than the storm drain system	Sanitary sewer alignments known or suspected to have been constructed with an underdrain system	Inadequate sanitary sewer level of service (LOS) resulting in regular surcharging, customer back-ups, or frequent customer complaints	Areas formerly served by combined sewer systems	Sanitary sewer infrastructure defects (e.g., leaking service laterals, cracked, broken, or offset sanitary infrastructure, directly piped connections between storm drain and sanitary sewer infrastructure, or other vulnerability factors identified through I/I, etc.)	Wet Weather Sampling Required? (Y or N)	Sewer pump/lift stations, siphons, sewer restrictions where power/equipment failures or blockages could result in SSOs	Sanitary sewer & storm drain infrastructure >40 years old	Age of oldest sewer pipe in catchment	Widespread code-required septic system upgrades required at property transfers due to inadequate soils, water table separation or other physical constraints rather than poor owner maintenance	History of multiple BOH actions addressing widespread septic system failures due to inadequate soils, water table separation, or other physical constraints, rather than poor owner maintenance	
DOU-119950	11						x		x	Yes		2012				
DOU-119989	6									No		2012				
DOU-119994	6									No		2010				
DOU-119998																
DOU-121044	1									No		2012				
DOU-121046	6									No		2012				
DOU-121047	6									No		2012				
DOU-121092	8									No						
DOU-121203																
DOU-121528	6				x					Yes		2010				
DOU-121530	6									No		2005				
DOU-121547	8									No		2005				
DOU-121573	6									No						
DOU-121582	6									No		1986				
DOU-121584	6									No						
DOU-121585	6									No	x	1937				
DOU-121591	6									No		1988				
DOU-121594	2				x					Yes						
DOU-121598	2				x					Yes						
DOU-121600	6									No						
DOU-121607	2									No	x	1893				
DOU-121609	2				x					Yes	x	1893				
DOU-121613	2									No						
DOU-121622	2									No	x	1927				
DOU-121625	6			x						Yes						
DOU-121633	8									No	x	1970				
DOU-121638	8									No		1992				
DOU-121646	8									No						
DOU-121656	8				x					Yes		1989				
INT-1	12									No		2016				
INT-10	2									No	x	1959				
INT-11	12									No						
INT-17	12						x			Yes						
INT-29																
INT-32	11						x			Yes						
INT-33	11									No						
INT-36																
INT-38																
INT-43	3				x					Yes						
INT-46	9									No						
INT-47	8									No						
INT-51	10									No	x	1902				
INT-55	10									No						
INT-56	8									No						
INT-58	12									No						
INT-6	1									No						